

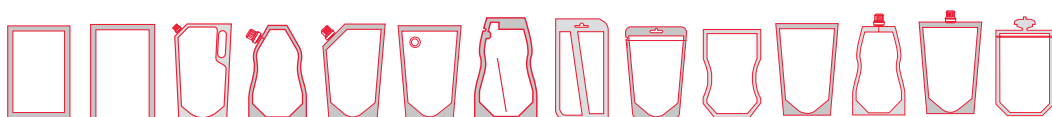
# H Series H260 / H280

**High engineering and flexible solutions with up to 5 filling stations.**

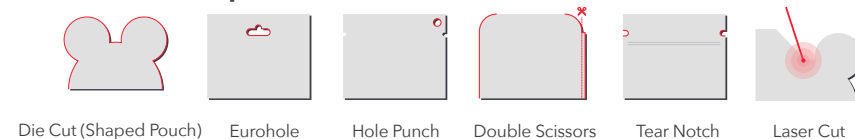
The H260 and H280 are horizontal form fill and seal machines with advanced technology and a precise mechanical design. As well as the rest of the range, this complies with the simplicity and robustness standards of Mespack design. It is particularly indicated to cover high-speed production needs for small and medium-size flat and stand-up pouches.



### Packaging Formats:



### Die-cut Solutions (optional):



### Technical Specifications

MACHINE	POUCH SIZE MIN (mm)	POUCH SIZE MAX (mm)	GUSSET MIN-MAX (mm)	MAX VOLUME (cc)	OUTPUT (p.p.m.)	FILLING STATIONS	POUCH TYPE
<b>H260 S</b>	80x100	270x300	---	2.000 c.c.	75-80	5	Flat
<b>H260 D</b>	60x100	130x300	---	750 c.c.	150-160	5	Flat
<b>H260 4</b>	60x100	65x240	---	150 c.c.	280	2	Flat
<b>H260 FE</b>	80x100	270x300	40-120	2.500 c.c.	65-70	5	Stand-up
<b>H260 FED</b>	70x100	130x300	40-120	750 c.c.	130-140	5	Stand-up
<b>H280 FE</b>	60x100	280x300	40-120	3000 c.c.	70	3	Stand-up
<b>H280 FED</b>	60x100	140x300	40-120	800 c.c.	140	3	Stand-up

### Filling Stations:



S: Flat pouch simplex D: Flat pouch duplex 4: Flat pouch 4-up  
FE: Stand-up pouch simplex FED: Stand-up pouch duplex  
Final speed will depend on product and film characteristics

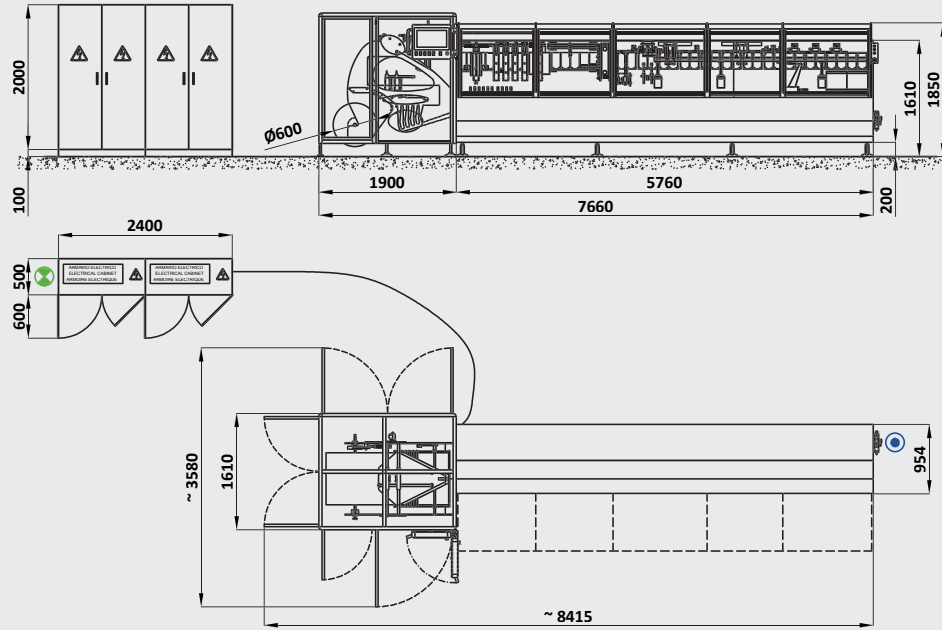


H260

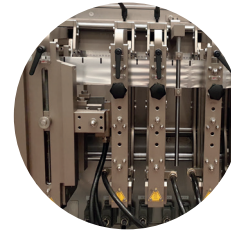


H280

## Machine Layout

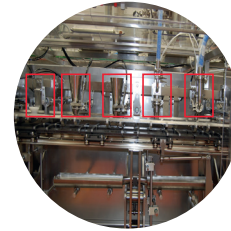


Layout reference: H260 FED basic machine. Dimensions in mm.  
The final layout, power, and air consumption are based on the basic machine, it may change due to Project and exact equipment model.



### Sealing Stations

Our sealing groups are able to work with various materials, thus obtaining optimum quality with minimum energy consumption.



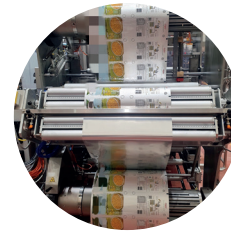
### Filling Stations

Up to 5 filling stations are available to increase solution flexibility.



### Quick Changeover (optional)

A quick changeover reduces material waste when the format is altered. The preparation of a pouch format change requires not only time but also film and energy consumption.



### Autosplice Unwinder (optional)

The automatic reel splicing system is designed to eliminate roll change downtime. It allows you to change running web rolls without stopping production.



New Controls:  
Mespac Athena



Can be Adapted to Work  
with Sustainable Materials

NOISE LEVEL	MAX. REEL DIMENSIONS	ELECTRICAL CONSUMPTION	REEL CORE [MM. Ø]	AIR CONSUMPTION	AIR PRESSURE
< 70 Db	600 mm.Ø	15-18 kW	76,2 (3")/152,4 (6")	200-500 l/min	6 bar

#### Mespac Headquarters

C/ Mar Adriàtic 18 Pol. Ind. Torre del Rector  
08130 Santa Perpètua De Mogoda, Barcelona (Spain)  
(+34) 935 747 227 / info@mespack.com

#### Mespac North America

424 Howard Avenue Des Plaines, IL 60018 (USA)  
(+1) 224 297 0952 / infousa@mespack.com

#### Mespac India

504, 5th floor Bhoomi Velocity Infotech Park, Plot No. 39,  
Road No. 23, Wagle Industrial Estate, Thane (West) - 400604  
(+22) 662 473 00 / infoindia@mespack.com

Check our solution finder at  
**mespack.com**

