

**mespack**

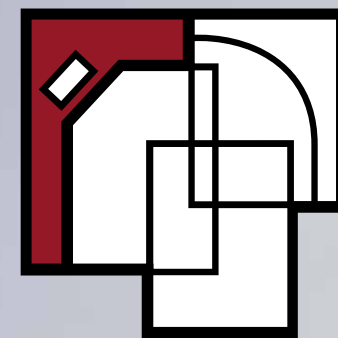
---

A DURAVANT COMPANY

**Innovative Packaging  
Technologies**



***the importance of know-how***



**mespack**

A DURAVANT COMPANY



A large glass-fronted building with the word 'mespack' in large, red, 3D block letters mounted on the upper part of the facade. The building reflects the surrounding green trees and blue sky. The logo is mounted on a red metal frame.

# mespack

**The new millenium  
is establishing new bases  
for the buying and  
consumer habits.**

# *YOUR* **PACKAGING** *PARTNER*

Flexible packaging has changed in great manner in the past few years to the point that today the pack presentation cannot be any longer a simple package but a real packaging solution with real shape and function benefits which will set the difference between a well presented and innovative product and the rest.

New packaging methods are constantly being developed to provide more attractive packs as well as extended product protection and shelf life. We at Mespack are playing an active role finding new valuable marketing benefits through packaging innovation.

Headquartered in Barcelona, Spain, Mespack is an international manufacturer of flexible packaging solutions that engineers and builds high speed machinery for the world's leading consumer packaged goods companies.

Recognized as a highly innovative brand delivering creative, functional and sustainable packaging technologies, Mespack has a broad portfolio of products that specialize in forming, filling and sealing sachets, sticks, pouches and other film-based packaging.

With more than 1,500 machines in service worldwide, Mespack excels in export management with a sales network in over 70 countries around the world and regional service centers that provide expedited access to parts and service.

Mespack serves the FOOD, BEVERAGE, PHARMACEUTICAL, CHEMICAL, CONFECTIONERY, COSMETICS, HOME CARE and PERSONAL CARE markets. Mespack is a Duravant Company.



## AREA OF ACTIVITY

The horizontal form fill-seal pouch makers and stick pack machines are the core product lines of Mespack.

Mespack is continuously expanding its machine range to the point that there is hardly any product which cannot be packed into a pouch made of flexible film.

Solid, liquid, powder, granules, everything is possible on a Mespack machine which enables you to present your product in a most innovative shape and using latest techniques.

The main areas of activity to host our machinery are food, pharmaceutical, chemical, confectionary, cosmetic and personal care sectors among others.



## TECHNOLOGY

Mespack machines incorporate the most advanced technology which conforms with main International standards and regulation.

Our equipment combines both simplicity and heavy duty construction to enable maximum efficiency and minimum downtime.

On the High Tech area, Mespack has implemented new concepts to increase production capacity and reduce waste and change over time. Fully automatic film auto-splice systems and automatic pouch size change of dimensions through the touch screen are some good examples.

Also, some new models have been presented to the international markets recently, as the new concept of continuous motion filling system which increase the machine output in about 50% compared with a conventional I.M. machine. New models in quattro version are also very successful for Ultraclean applications.

## OUR CUSTOMERS

Mespack has over the last few years made an extraordinary effort to develop new, more robust and efficient machines.

Today, we are a leading supplier of horizontal form-fill-seal machines for food, pharma, home & personal care, confectionery, etc. which we export all over the world.

Companies like Nestlé, Unilever, P&G, Delmonte, Reckitt Benckiser, L'Oreal, Colgate and many other have helped us in great manner to achieve our present status.

To all of them our gratitude for their confidence and continued support.

## SALES NETWORK

Mespack's sales network is formed by a highly qualified and professional team who is able to understand and respond rapidly to all enquiries.

This group is formed by technical salesmen and engineers who are in close cooperation with our international Sales Network in over 70 Countries around the world.

Each geographic zone falls within the responsibility of an Area Manager who is in contact with the customer to analyze and quote for the projects as well as to help and coordinate any needed action until the machine has been successfully delivered and commissioned.

This fluid operational system together with a success minded mentality makes Mespack sales team a key issue to achieve our targets in the International markets.

*Every day many millions of packs are produced  
on Mespack machines thus securing future  
new sales in the world market.*





# flexibility



**mespack**

A DURAVANT COMPANY



# INNOVATION





A stylized world map composed of a grid of small white dots on a blue background. Red dots are scattered across the map, primarily concentrated in North America, Europe, and parts of South America and Africa, representing service locations. The map is centered on the Atlantic Ocean.

HEADQUARTER  
BARCELONA (SPAIN)

**mespack**

A DURAVANT COMPANY

With **more than 1500 machines** in service worldwide Mespac has succeeded to create a spare parts department and regional service centers which are able to source any required part within a short period of time.





# *SERVICING* **THE WORLD** *MARKET*

---

**We at Mespack are fully committed to support machines delivered all over the world.**

Our service & Spare parts Department is formed by engineers with years of experience and proven ability in servicing machines in the export markets.

Their dedication and professional skills are imperative for keeping our international reputation of being a highly reliable company.

Nowadays, Mespack complies with the growing necessity of having highly specialized engineers who are able not only to carry out their main target which is commissioning the equipment but also to create a personal relationship with customers and line operators which always results in mutual benefit.

# H **SERIES**

**This family of form-fill-seal machines has been conceived for low, medium and large fill volumes.**

This new generation of form-fill-seal machines incorporates Mespac's latest technology and innovative design and has been conceived for low, medium and large production volumes.

The "H" Program is composed of **24 different machines** with multiple versions which enable our Customers to choose the most convenient model.

Our medium and big range machines are designed to be built in modular construction and have common parts except the main frame which facilitate the spare parts storage and service and can be supplied with all types of fillers and related accessories.

This new generation of machines are of rugged construction and user friendly and have proven to be easy to operate and maintain.





The **H-Series** is remarkable for its flexibility and the possibility of producing different shapes and pack presentations, flat or stand up pouches, cap fitments for easy product pouring, straw attachment for soft drinks, zipper reclosable systems, etc. are presentations available today for actual and future products and market demands.

A wide number of different fillers are available as auger and volumetric fillers, pumps, weighers, as well as other customized dosing systems.

Product protection aspects are also a priority. We have a number of solutions for gas flushing to minimize residual oxygen contents in the pack, as well as cleaning systems C.I.P. or S.I.P.

Our success in global markets is a direct result of meeting the challenge to produce creative package designs with reliable and cost effective equipment.

#### MAIN FEATURES

- 12" colour touch screen
- Independent electrical cabinet
- Independent unwind system with autosplice features *(optional)*
- Automatic adjustment control of seal jaws position *(optional)*
- Automatic hole punch correction system for stand up pouches
- Servo driven change over system for forming plough
- Triple pouch opening system through vacuum, air jet & mechanical device
- 3 to 5 different filling stations
- Cam driven walking beam *(for big formats)*
- Pouch grippers engineered to hold up to 2 Kg
- Static pouch stretching prior to sealing
- Pouch reject station
- PLC automatic lubrication system
- Servo driven stroke indexing system by rollers
- Ultraclean versions *(optional)*
- Laser coders and scorers *(optional)*
- ATEX compliance *(optional)*
- Film sterilization system *(optional)*
- Laminar flow *(optional)*
- M.A.P. *(Modified Atmosphere Packaging)*
- Ultrasonic sealing *(optional)*

**INNOVATIVE  
PACKAGING  
TECHNOLOGIES**

**H-SERIES**

# H-570

## TECHNICAL SPECIFICATIONS

MACHINE	POUCH SIZE MIN.	POUCH SIZE MAX.	GUSSET MIN. /MAX.	MAX. VOLUME	OUTPUT P.P.M.	FILLING STATION	POUCH TYPE
<b>H-570 S</b>	150 x 200	570 x 400	—	11.000 c.c.	60 - 70	1 - 2	Flat
<b>H-570 D</b>	150 x 200	285 x 400	—	4.000 c.c.	120 - 140	1 - 2	Flat
<b>H-570 /3</b>	120 x 150	190 x 400	—	2.000 c.c.	180 - 210	1 - 2	Flat
<b>H-570 FE</b>	150 x 200	570 x 400	40 - 150	16.000 c.c.	50 - 60	1 - 2	Stand up
<b>H-570 FED</b>	150 x 200	285 x 400	40 - 150	5.500 c.c.	100 - 120	1 - 2	Stand up
<b>H-570 FET</b>	120 x 150	190 x 400	40 - 150	2.500 c.c.	150 - 180	1 - 2	Stand up

Final speed will depend on product and film characteristics

Noise level  
< 70-80 Db

Max. Reel dimensions  
800/600 mm. Ø

Electrical consumption  
30-35 Kw

Reel core  
76 (3")/152 (6") mm. Ø

Air consumption  
150-700 l/min

Air pressure  
6 bar

TRIPLEX FEATURES  
**UP TO 190 MM**  
**WIDTH** POUCHES







**H-SERIES**

# H-540

## TECHNICAL SPECIFICATIONS

MACHINE	POUCH SIZE MIN.	POUCH SIZE MAX.	GUSSET MIN. /MAX.	MAX. VOLUME	OUTPUT P.P.M.	FILLING STATION	POUCH TYPE
H-540-FE6	80 x 50	90 x 240	40 - 50	200 c.c.	300	1	Stand up

Final speed will depend on product and film characteristics

Noise level  
< 80 Db

Max. Reel dimensions  
800/600 mm. Ø

Electrical consumption  
24 Kw

Reel core  
76 (3")/152 (6") mm. Ø

Air consumption  
1500 l/min

Air pressure  
6 bar

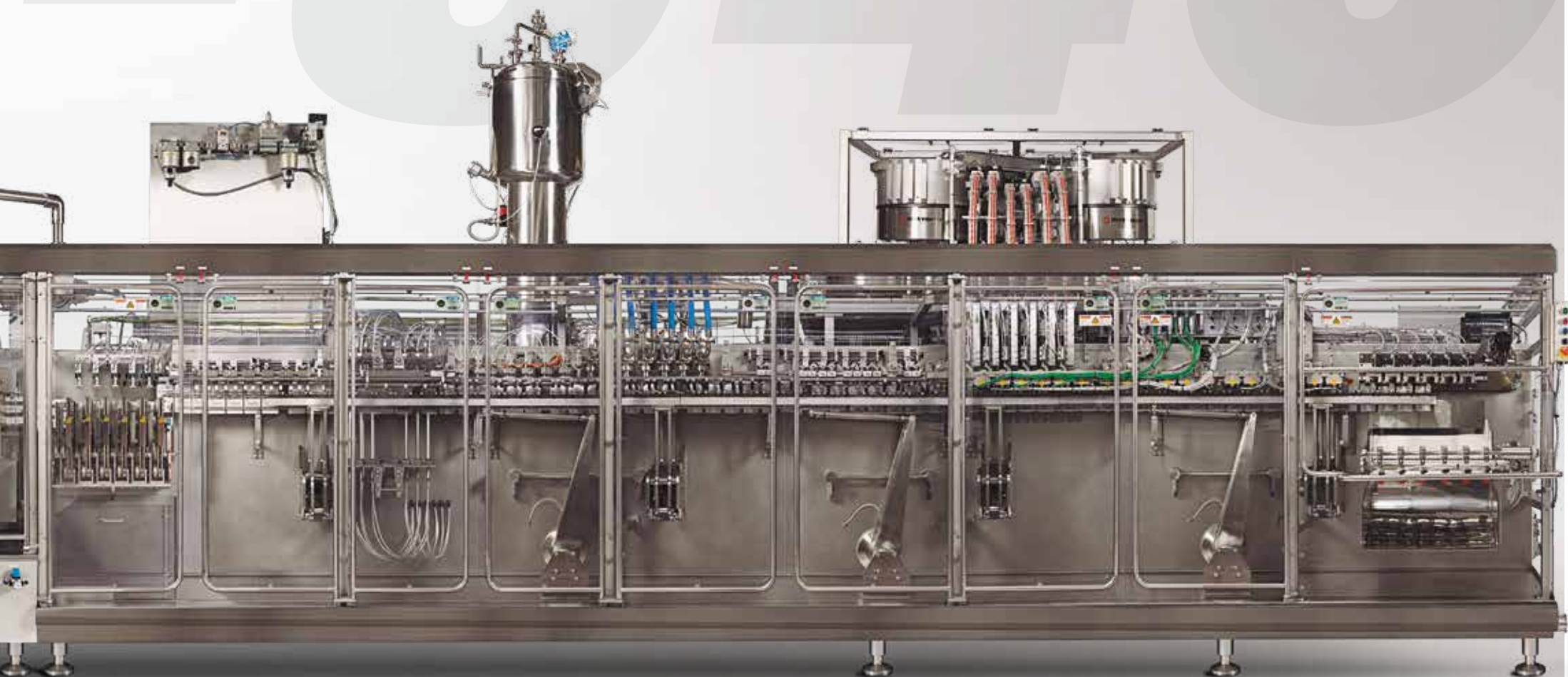
DESIGNED TO COVER **HIGH  
CAPACITY DEMANDS** OF BABY  
FOOD AND ALL KINDS OF FRUIT  
PURÉE PRODUCERS

The **H-540-FE6** is a high capacity packaging equipment producing between 300 and 360 pouches per minute with top choke-proof spout.

This equipment incorporates a servo-motorized pouch moving system to guarantee precision and accuracy while reducing product and film waste. It's especially designed for high volume production of pouches with top spout and, at the same time, meeting the safety cleanliness and performance needs of the Baby Food Industry.







**H-SERIES**

# H-440

## TECHNICAL SPECIFICATIONS

MACHINE	POUCH SIZE MIN.	POUCH SIZE MAX.	GUSSET MIN. /MAX.	MAX. VOLUME	OUTPUT P.P.M.	FILLING STATION	POUCH TYPE
H-440 FET	80 x 100	145 x 300	40 - 70	850 c.c.	up to 210	3	Stand up
H-440 FEQ	80 x 100	110 x 300	40 - 50	400 c.c.	up to 260	3	Stand up

Final speed will depend on product and film characteristics

Noise level < 80 Db	Max. Reel dimensions 800/600 mm. Ø	Electrical consumption 25 Kw	Reel core 76 (3")/152 (6") mm. Ø	Air consumption 700-800 l/min	Air pressure 6 bar
------------------------	---------------------------------------	---------------------------------	-------------------------------------	----------------------------------	-----------------------

QUADRUPLEX FEATURES  
**UP TO 110 MM**  
**WIDTH** POUCHES







**H-SERIES**

# H-420

## TECHNICAL SPECIFICATIONS

MACHINE	POUCH SIZE MIN.	POUCH SIZE MAX.	GUSSET MIN. /MAX.	MAX. VOLUME	OUTPUT P.P.M.	FILLING STATION	POUCH TYPE
<b>H-420 S</b>	120 x 150	420 x 400	—	5.000 c.c.	55 - 60	3	Flat
<b>H-420 D</b>	120 x 150	210 x 400	—	1.500 c.c.	110 - 120	3	Flat
<b>H-420 FE</b>	120 x 150	420 x 400	40 - 150	10.000 c.c.	55 - 60	3	Stand up
<b>H-420 FED</b>	120 x 150	210 x 400	40 - 150	2.500 c.c.	110 - 120	3	Stand up

Final speed will depend on product and film characteristics

Noise level  
< 70-80 Db

Max. Reel dimensions  
800/600 mm. Ø

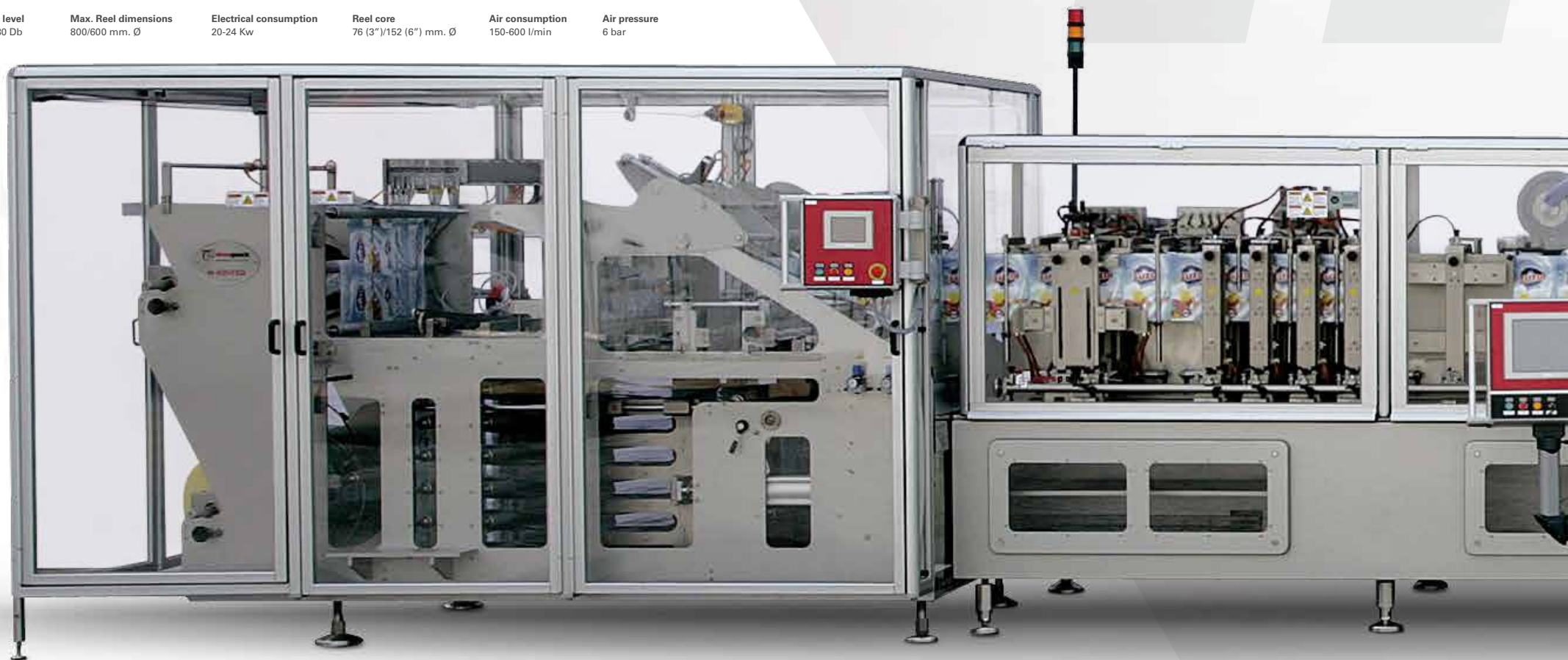
Electrical consumption  
20-24 Kw

Reel core  
76 (3")/152 (6") mm. Ø

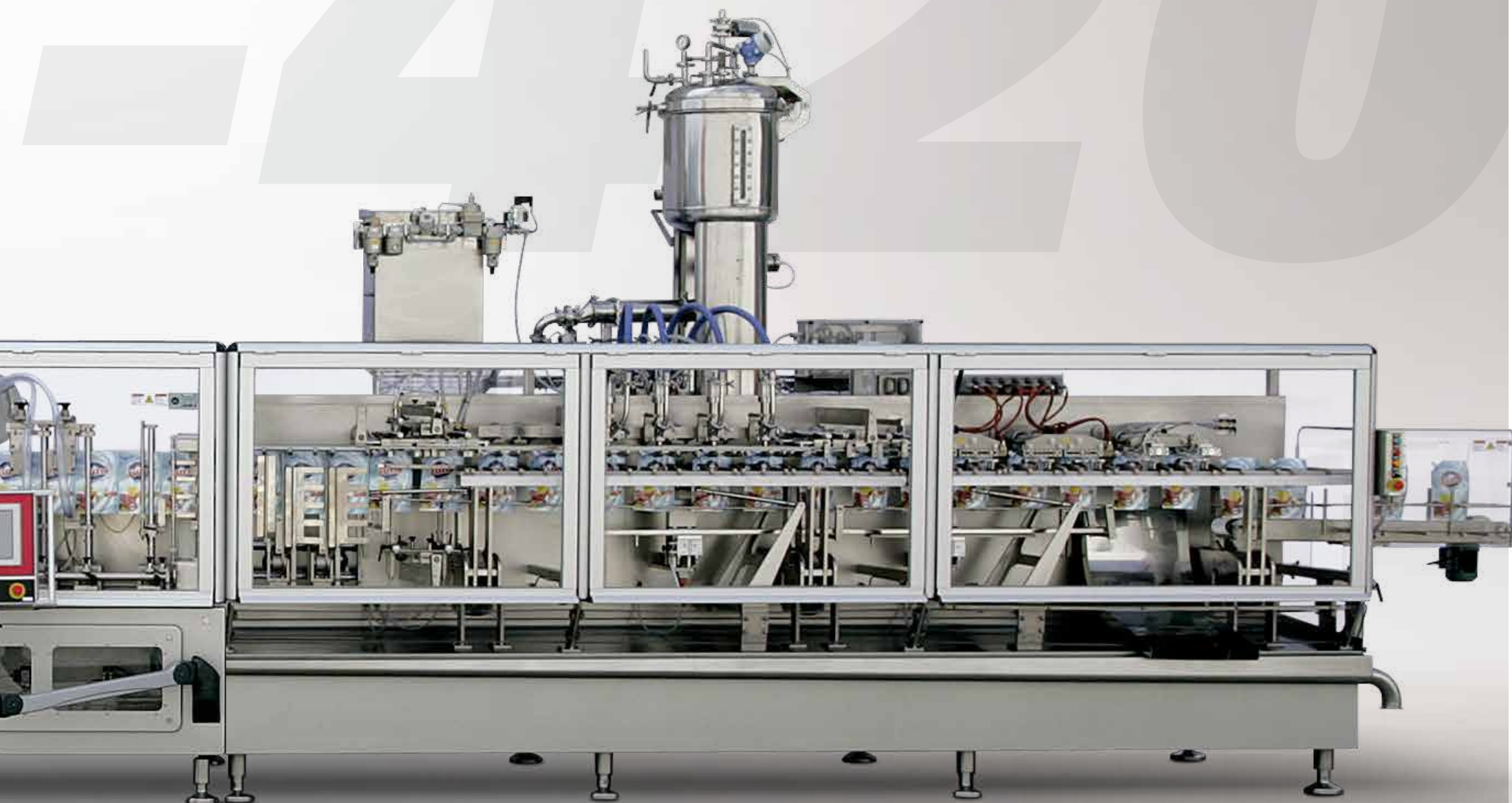
Air consumption  
150-600 l/min

Air pressure  
6 bar

# THE SOLUTION **FOR** **LARGE VOLUMES**







**H-SERIES**

# H-360

## TRIPLEX RETORT

## EXECUTION

**TECHNICAL SPECIFICATIONS**

MACHINE	POUCH SIZE MIN.	POUCH SIZE MAX.	GUSSET MIN. /MAX.	MAX. VOLUME	OUTPUT RPM.	FILLING STATION	POUCH TYPE
<b>H-360 S</b>	120 x 150	360 x 300	—	2.000 c.c.	up to 70	3	Flat
<b>H-360 D</b>	90 x 100	180 x 300	—	1.000 c.c.	up to 140	3	Flat
<b>H-360 FE</b>	120 x 150	360 x 300	40 - 120	3.000 c.c.	60 - 65	3	Stand up
<b>H-360 FED</b>	90 x 100	180 x 300	40 - 120	1.500 c.c.	120 - 130	3	Stand up
<b>H-360 FET</b>	80 x 100	120 x 300	40 - 70	750 c.c.	180 - 195	3	Stand up
<b>H-360 FEQ</b>	70 x 100	90 x 300	40 - 50	350 c.c.	240 - 260	3	Stand up
<b>H-360 /3</b>	50 x 50	120 x 240	—	300 c.c.	up to 240	1	Flat
<b>H-360 /4</b>	50 x 50	90 x 240	—	250 c.c.	up to 320	1	Flat

Final speed will depend on product and film characteristics

Noise level  
< 70-80 Db

Max. Reel dimensions  
800/600 mm. Ø

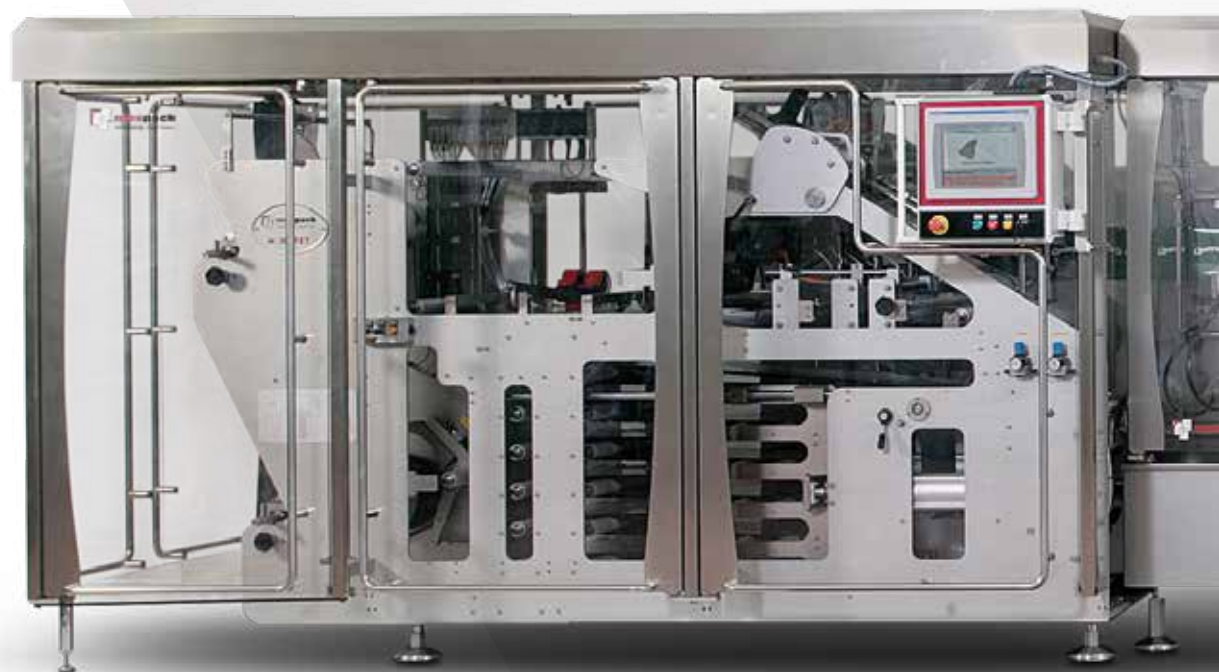
Electrical consumption  
20-25 Kw

Reel core  
76 (3"/152 (6") mm. Ø

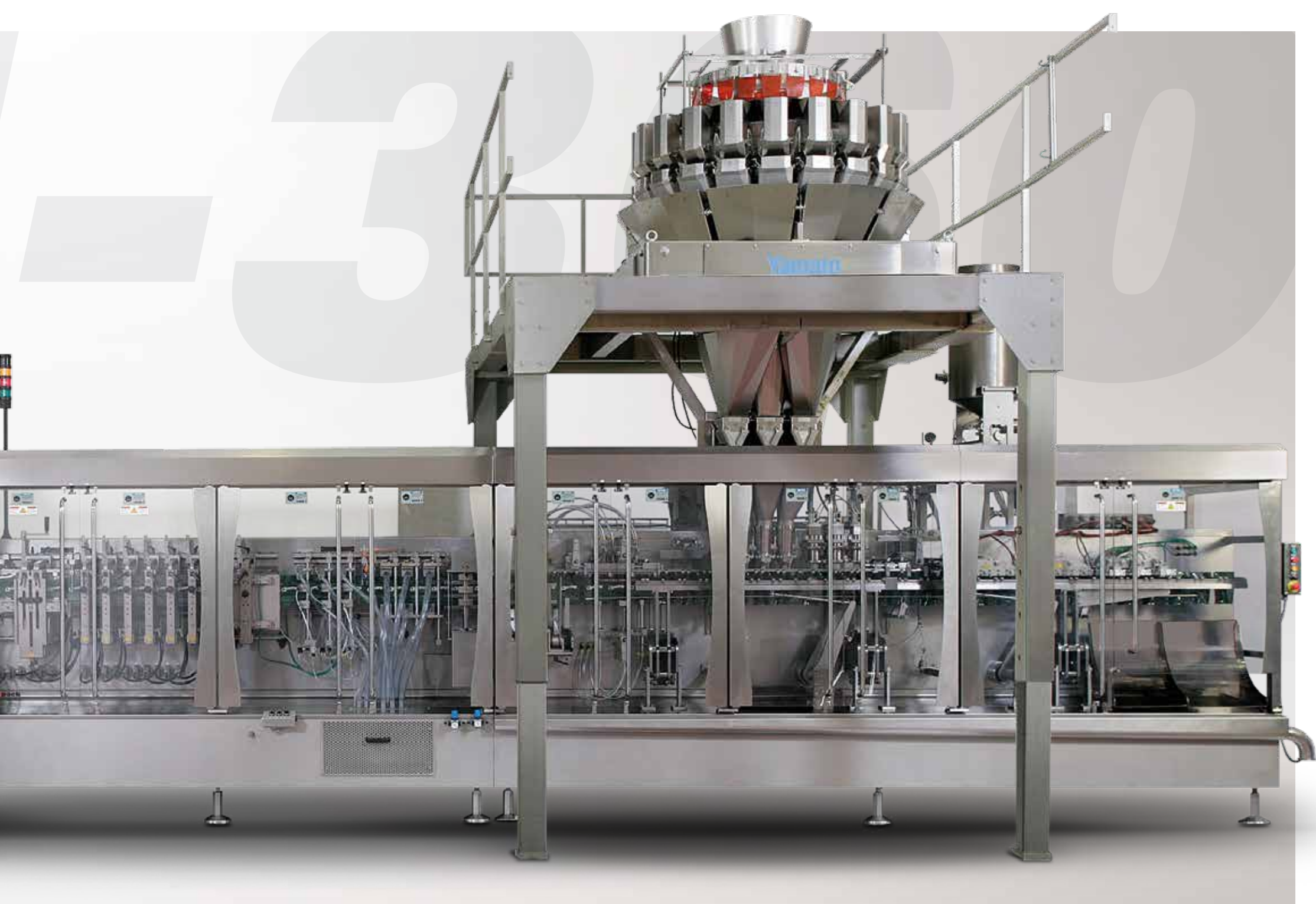
Air consumption  
150-800 l/min

Air pressure  
6 bar

**Especially  
suited for Veggies.**







**H-SERIES**

# H-330

## TECHNICAL SPECIFICATIONS

MACHINE	POUCH SIZE MIN.	POUCH SIZE MAX.	GUSSET MIN. /MAX.	MAX. VOLUME	OUTPUT P.P.M.	FILLING STATION	POUCH TYPE
H-330-6	50 x 50	65 x 240	40 - 50	40 c.c.	340	1	Flat

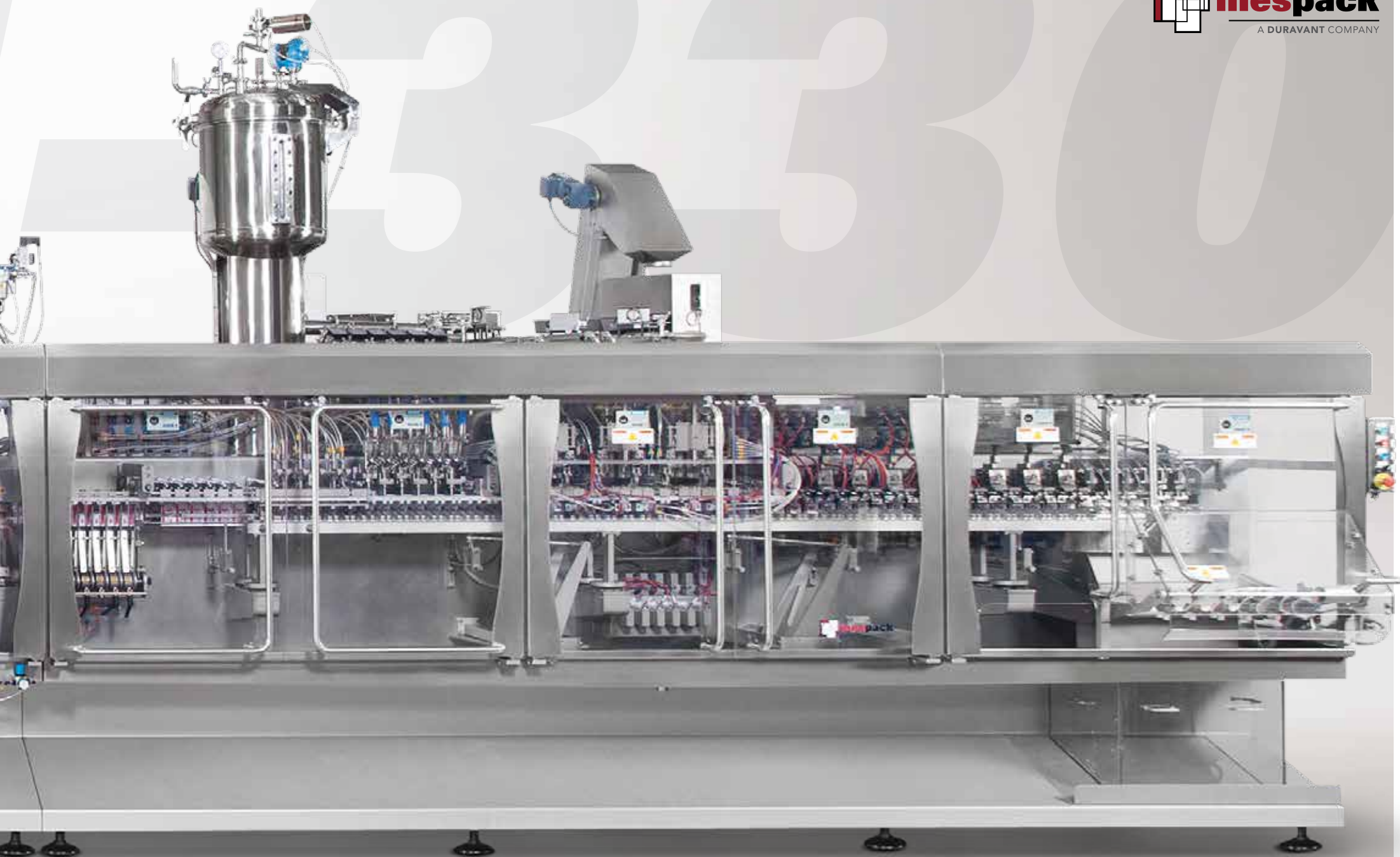
Final speed will depend on product and film characteristics

Noise level < 70 Db	Max. Reel dimensions 800/600 mm. Ø	Electrical consumption 18 Kw	Reel core 76 (3")/152 (6") mm. Ø	Air consumption 700 l/min	Air pressure 6 bar
------------------------	---------------------------------------	---------------------------------	-------------------------------------	------------------------------	-----------------------

**OPTIMAL SOLUTION**  
*FOR COSMETIC POUCHES  
WITH TOP SPOUT*







**H-SERIES**

# H-320

## TRIPLEX & QUADRUPLIX

## CAPABILITIES

**TECHNICAL SPECIFICATIONS**

MACHINE	POUCH SIZE MIN.	POUCH SIZE MAX.	GUSSET MIN. /MAX.	MAX. VOLUME	OUTPUT PPM.	FILLING STATION	POUCH TYPE
<b>H-320 S</b>	120 x 150	320 x 300	—	2000 c.c.	up to 70	3	Flat
<b>H-320 D</b>	90 x 100	160 x 300	—	750 c.c.	up to 140	3	Flat
<b>H-320 FE</b>	120 x 150	320 x 300	40 - 120	3000 c.c.	60 - 65	3	Stand up
<b>H-320 FED</b>	80 x 100	160 x 300	40 - 120	1000 c.c.	120 - 130	3	Stand up
<b>H-320 FET</b>	80 x 100	105 x 300	40 - 70	750 c.c.	180 - 195	3	Stand up
<b>H-320 FEQ</b>	70 x 100	80 x 300	40 - 50	250 c.c.	240 - 260	3	Stand up
<b>H-320 /3</b>	50 x 50	105 x 240	—	200 c.c.	up to 240	1	Flat
<b>H-320 /4</b>	50 x 50	80 x 240	—	100 c.c.	up to 320	1	Flat

Final speed will depend on product and film characteristics

Noise level  
< 70-80 Db

Max. Reel dimensions  
800/600 mm. Ø

Electrical consumption  
18 Kw

Reel core  
76 (3")/152 (6") mm. Ø

Air consumption  
150-800 l/min

Air pressure  
6 bar







**H-SERIES**

# H-260/220

## ENGINEERED SOLUTIONS FOR MULTICOMPONENT UP TO 5 FILLING STATIONS

**TECHNICAL SPECIFICATIONS**

MACHINE	POUCH SIZE MIN.	POUCH SIZE MAX.	GUSSET MIN. /MAX.	MAX. VOLUME	OUTPUT P.P.M.	FILLING STATION	POUCH TYPE
<b>H-260 S</b>	80 x 100	270 x 300	—	2.000 c.c.	75 - 80	5	Flat
<b>H-260 D</b>	60 x 100	130 x 300	—	750 c.c.	150 - 160	5	Flat
<b>H-260 FE</b>	80 x 100	270 x 300	40 - 120	2.500 c.c.	65 - 70	5	Stand up
<b>H-260 FED</b>	70 x 100	130 x 300	40 - 120	750 c.c.	130 - 140	5	Stand up
<b>H-220 S</b>	80 x 100	220 x 300	—	1.000 c.c.	75 - 80	3	Flat
<b>H-220 D</b>	60 x 100	110 x 300	—	500 c.c.	150 - 160	3	Flat
<b>H-220 FE</b>	80 x 100	220 x 300	40 - 120	2.000 c.c.	65 - 70	3	Stand up
<b>H-220 FED</b>	70 x 100	110 x 300	40 - 120	500 c.c.	130 - 140	3	Stand up

Final speed will depend on product and film characteristics

Noise level < 70-80 Db	Max. Reel dimensions 800/600 mm. Ø	Electrical consumption 20 Kw	Reel core 76 (3")/152 (6") mm. Ø	Air consumption 150-600 l/min	Air pressure 6 bar
---------------------------	---------------------------------------	---------------------------------	-------------------------------------	----------------------------------	-----------------------







**H-SERIES**

# H-180/150

## VALUE ADDED TECHNOLOGY

**TECHNICAL SPECIFICATIONS**

MACHINE	POUCH SIZE MIN.	POUCH SIZE MAX.	GUSSET MIN. /MAX.	MAX. VOLUME	OUTPUT P.P.M.	FILLING STATION	POUCH TYPE
<b>H-180 S</b>	70 x 100	190 x 300	—	1.000 c.c.	80 - 90	4	Flat
<b>H-180 D</b>	60 x 100	90 x 300	—	200 c.c.	160 - 180	4	Flat
<b>H-180 FE</b>	70 x 100	190 x 300	40 - 120	1.500 c.c.	65 - 70	4	Stand up
<b>H-150 S</b>	60 x 80	160 x 300	—	450 c.c.	80 - 90	4	Flat
<b>H-150 D</b>	50 x 100	75 x 300	—	150 c.c.	160 - 180	4	Flat
<b>H-150 FE</b>	60 x 80	160 x 300	40 - 90	900 c.c.	65 - 70	4	Stand up

Final speed will depend on product and film characteristics

Noise level < 70 Db	Max. Reel dimensions 800/600 mm. Ø	Electrical consumption 18-22 Kw	Reel core 76 (3")/152 (6") mm. Ø	Air consumption 150-500 l/min	Air pressure 6 bar
------------------------	---------------------------------------	------------------------------------	-------------------------------------	----------------------------------	-----------------------

The **H-180** is a medium size horizontal form –fill– seal machine which produces pouches from a reel of flexible material specially suited to apply spouts, zip lock applicators or special shapes.

Flexibility is the main aspect, as using the same machine it is possible to make a wide range of different pack presentations with maximum efficiency and keeping high seal integrity.

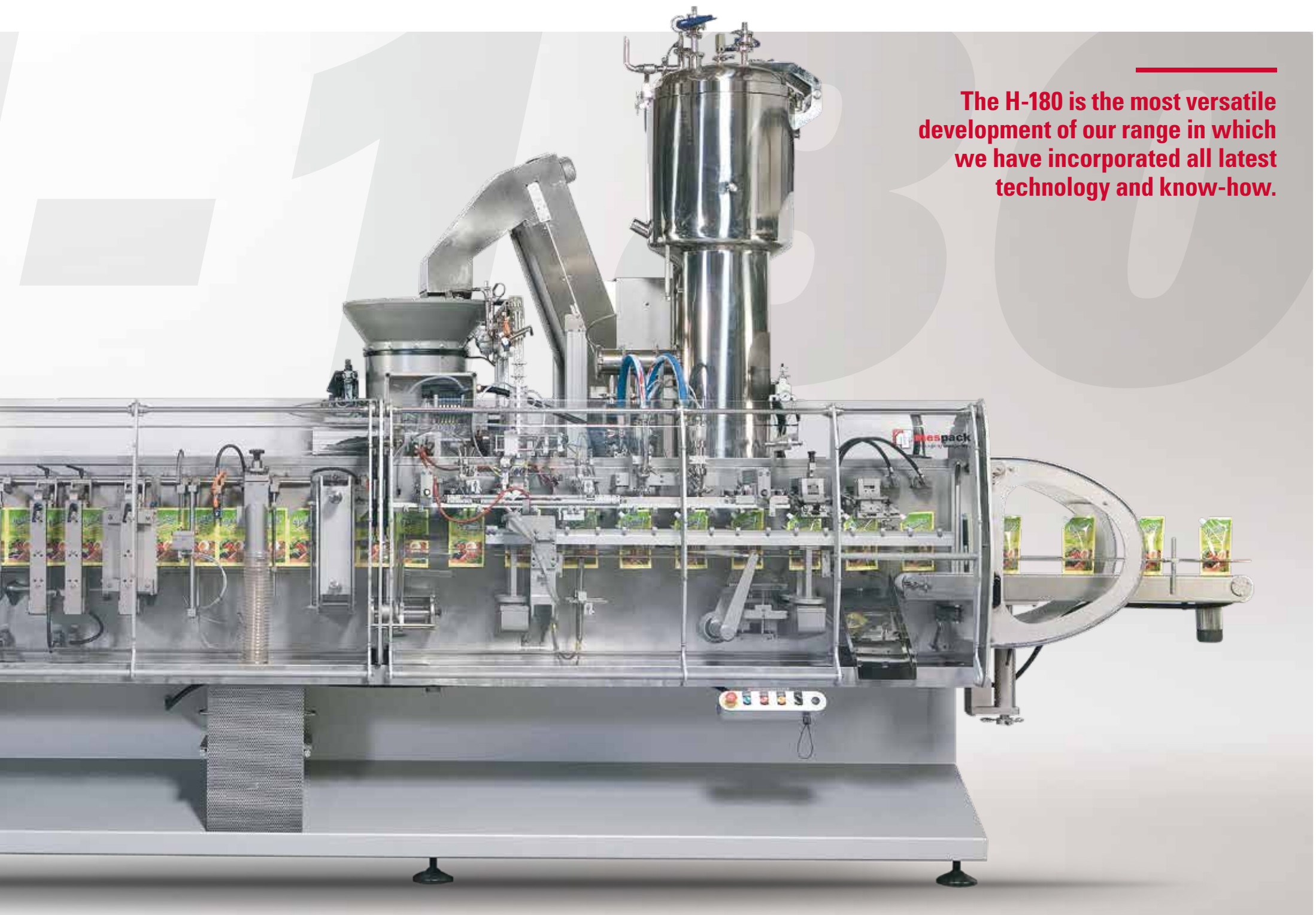
Change over simplicity and rapidity from one product to another or from size to size, makes Mespac machines unique with respect to any existing competitive machine.

This model is especially suited for frozen food, prepared food, sauces & condiments, powdered or liquid, beverages, dried fruits, snacks, confectionary, dry mixes... etc.





**The H-180 is the most versatile  
development of our range in which  
we have incorporated all latest  
technology and know-how.**



**H-SERIES**

# H-145

## COMPETITIVE STAND UP POUCHES UP TO 500CC

**TECHNICAL SPECIFICATIONS**

MACHINE	POUCH SIZE MIN.	POUCH SIZE MAX.	GUSSET MIN. /MAX.	MAX. VOLUME	OUTPUT PPM.	FILLING STATION	POUCH TYPE
<b>H-145-FE</b>	80 x 100	145 x 240	40 - 90	500 c.c.	65 - 70	4	Stand up

Final speed will depend on product and film characteristics

Noise level < 70 Db	Max. Reel dimensions 450 mm. Ø	Electrical consumption 15 Kw	Reel core 76 (3")/152 (6") mm. Ø	Air consumption 300 l/min	Air pressure 6 bar
------------------------	-----------------------------------	---------------------------------	-------------------------------------	------------------------------	-----------------------

The Mespack **H-145** can automatically fill powders, granules, liquids or pasty products, offering a variety of fillers to suit each specific product.

The pack presentation and shape can also be chosen from the wide range of available possibilities, shaped pouches, zip-lock features, cap fitments to facilitate product dispensing, built in straw for soft drinks etc. This model has two filling stations to fill one or more products into the same pouch. Integrated electrics in the main machine frame, enabling to

place this unit in a reduced floor space. Human Machine Interface (HMI) through a 12" colour touch screen. This allows to control all functions of the machine, change fill dose, modify the temperature of the respective seal bars, increase or decrease the speed of the machine as well as to obtain all production data, machine efficiency etc.

Our continued effort in R+D to adapt our range of machines to the actual market demands allows us to offer a multitude of options at a fair price.







**The H-145 is the smallest, most compact and competitive machine capable of forming, filling and sealing stand up pouches up to a contents of 500 CC.**

# *THE VALUE OF* **INNOVATIVE** *DESIGN*

## **INNOVATION IN PACK DESIGN**

In addition to the product quality, the pack design is frequently a major factor for consumers selection of a product.

We, at Mespack are fully aware of this circumstance and our R+D team is constantly creating new pack designs and ideas which we later on present or jointly develop with our customers.

If you have new ideas or wish to improve your product presentation, talk to us and we will find together the best solution to make your product more attractive.





## FILM MATERIAL

The main aim of flexible film is to keep the contents in good condition until they are sold and consumed and to encourage customers to purchase the products.

Quality packaging is essential to achieve both these objectives. The importance of packaging can be summarized as follows:

- If adequately packed and treated, the shelf-life of products may be extended and this allows the products to be distributed to both domestic and export markets.
- Attractive packaging prevents any wastage (such as leakage or deterioration) which may occur during transportation and distribution.
- Good packaging and presentation encourages consumers to buy.

High quality print can be obtained with actual flexible packaging films using either flexo or rotogravure printing.

Most common material used in our machines would be: PET/PE, PAPER/ALU/PE, ALU/PE, PET/ALU/PE, amongst many other combinations.

## SUSTAINABLE PACKAGING

Mespack has been for many years working actively in the development of new machines capable of producing packages which results in improved sustainability.

If compared with other types of packages, pouches or sachets reduce the impact and ecological footprint as the main target of flexible packaging is to improve the long term viability and the quality of the life for humans as well as the longevity of natural ecosystem.

By considering sustainability at the design stage it is possible to reduce the cost of the packaging and minimize its impact on the environment.

Another important point is that we can make your products more attractive to consumers who would prefer **recyclable** or **user friendly packages** that would result in the lowest possible weight and volume as well as optimise the efficiency in storage, transport and distribution.

We at Mespack are committed to develop some brilliant eco-innovative sustainable packaging solutions with various world leading Companies to improve waste reductions, safety compliance and environmental protection plans.

# SC SERIES

## PRE-MADE POUCHES

### TECHNICAL SPECIFICATIONS

MACHINE	POUCH SIZE MIN.	POUCH SIZE MAX.	MAX. VOLUME	OUTPUT PPM.	FILLING STATION	POUCH TYPE
<b>H-180 SC S</b>	80 x 120	190 x 300	1.500 c.c.	50 - 60	3	Flat / Stand up
<b>H-260 SC S</b>	80 x 120	260 x 300	2.500 c.c.	50 - 60	3	Flat / Stand up
<b>H-260 SC D</b>	80 x 120	130 x 300	800 c.c.	100 - 120	3	Flat / Stand up
<b>H-320 SC S</b>	90 x 120	320 x 350	3.000 c.c.	50 - 60	3	Flat / Stand up
<b>H-320 SC D</b>	90 x 120	160 x 350	1.000 c.c.	100 - 120	3	Flat / Stand up
<b>H-440 SC D</b>	100 x 120	220 x 350	2.000 c.c.	100 - 120	3	Flat / Stand up
<b>H-570 SC D</b>	140 x 150	285 x 350	3.000 c.c.	80 - 90	3	Flat / Stand up

Final speed will depend on product and film characteristics

Noise level  
< 70 Db

Electrical consumption  
10-30 Kw

Air consumption  
150-350 l/min

Air pressure  
6 bar

The **SC machines** are composed of a pouch feeding conveyor up to three lanes, a pick and place to transfer the pre-made pouches to a walking beam system and the main module where they will be open, filled and top sealed. This models are equipped with an independent electrical cabinet with a 12" colour touch screen.

As optional equipment a full range of items, as coders, hole punchers, notchers, cap fitments or spout applicators are available as well as different filling systems for powder, granules or liquid and pasty products. Also we can install multihead weighers as an option. Various models are available, according to pouch dimentions, volumes and capacities.





**Mespack presents the new  
SC Series for Pre-Made flat or  
stand up pouches.**



# HCM SERIES

## TECHNICAL SPECIFICATIONS

MACHINE	POUCH SIZE MIN.	POUCH SIZE MAX.	GUSSET MIN. /MAX.	MAX. VOLUME	OUTPUT PPM.	FILLING STATION	POUCH TYPE
<b>HCM-420 FED</b>	120 x 150	210 x 400	40 - 150	2.000 c.c.	up to 120	3	Stand up
<b>HCRM -640 FEQ</b>	120 x 150	160 x 300	40 - 120	1.000 c.c.	up to 280	3	Stand up

Final speed will depend on product and film characteristics

Noise level < 70 Db	Max. Reel dimensions 600 mm. Ø	Electrical consumption 35-45 Kw	Reel core 76 (3")/152 (6") mm. Ø	Air consumption 600-800 l/min	Air pressure 6 bar
------------------------	-----------------------------------	------------------------------------	-------------------------------------	----------------------------------	-----------------------

## FASTEST HFFS MACHINE IN THE MARKET

A patented combination of intermittent and continuous motion HFFS machine is capable of producing 60% more compared with a conventional HFFS machine.

New patented pouch transport system incorporating the new MGMS (Mespack grippers management system) which enables change-over of carousel system in less than 5 minutes through the touch screen. This machine can be supplied with all type of dosing systems and accessories on request.





**Patented Continuous Motion filling  
system allowing twice as much  
filling time if compared with a  
conventional HFFS machine.**





# NEW **STICKPACK** MACHINES

---

**The new stick-pack machine series offers higher reliability as well as the latest technology.**

**Mespack is proud to introduce the New Stickpack machine MS-Series composed of three different models depending on required reel width (600/1000/1200).**

Stick packs are an ideal presentation for liquids, powder, granules & pieces. Widely used for food or diet products, home & personal care, confectionary, pharmaceutical amongst many others.

The MS Series are built in a mono-block tubular heavy duty steel frame designed to provide free access to all sides of the machine as well as facilitate the maintenance procedures. Fully guarded machine with interlocked magnetic security switches.

Machines can be equipped with multiple dosing system configurations as well as special motorized systems for easy cleaning.

The MS Series offer a flexible choice of full-servo machines, ATEX compliance, laminar flow, film sterilization system, laser coders and scorers, etc., are some of the possibilities that can be installed in the machine on request.

Our goal is to continue to lead the market with an outstanding machine for a multitude of products that need high speed and reliable production. Our long experience in flexible packaging concepts and the acquired skills and know-how makes our products unique as regards quality and performance.

For Mespack, "technology" means high-quality, reliable & efficient solutions, and this keeps us constantly motivated to find the best packaging solutions for your products. We design & manufacture machines that are flexible, easy to maintain and meet current standards and increased operator safety.



**MS-SERIES**

# MS-600



**mespack**

A DURAVANT COMPANY

## TECHNICAL SPECIFICATIONS

MACHINE	MIN. STICK WIDTH	MAX. STICK WIDTH	MIN. STICK LENGTH	MAX. STICK LENGTH	CAPACITY-BAGS / MINUTE	MAX. REEL WIDTH	MACHINE DIMENSIONS
MS-600-4	17	70	50	190	240-280	600	1700 x 2300 x 2200 (without dosing system)
MS-600-6	17	45	50	190	360-420	600	
MS-600-8	17	32	50	190	480-560	600	
MS-600-10	17	25	50	190	600-700	600	
MS-600-12	17	20	50	190	720-840	600	
MS-600-14	17	17	50	190	840-980	600	

Final speed will depend on product and film characteristics

Noise level  
< 70 Db

Max. Reel dimensions  
500 mm. Ø

Electrical consumption  
8,5-12 Kw

Reel shaft  
76 (3")/152 (6") mm. Ø

Air consumption  
250 l/min

Air pressure  
6 bar

# WE STICK TO THE TREND



## MS-600 MAIN FEATURES

- Maximum reel width 600 mm
- Mono block tubular steel frame
- Compact design
- Output up to 75 strokes per minute
- Integrated electrical cabinet (independent opt.)
- Free access to operating side of the machine
- Free access to the inside of the machine for maintenance
- PLC controlled auto lubrication
- Micro-switch protected transparent polycarbonate guardings
- 12" Allen-Bradley color touch screen
- Servo driven main film drive system
- Pneumatically expandable reel shaft
- Hygienic design
- Drives inside the frame
- Full servo (under request)
- ATEX compliance (under request)
- Laser coder & scorers (under request)



**MS-SERIES**

# MS-1000

## TECHNICAL SPECIFICATIONS

MACHINE	MIN. STICK WIDTH	MAX. STICK WIDTH	MIN. STICK LENGHT	MAX. STICK LENGHT	CAPACITY-BAGS / MINUTE	MAX. REEL WIDTH	MACHINE DIMENSIONS
MS-1000-4	17	115	50	190	240-280	1000	2000 x 3300 x 2300 (without dosing system)
MS-1000-6	17	70	50	190	360-420	1000	
MS-1000-8	17	55	50	190	480-560	1000	
MS-1000-10	17	45	50	190	600-750	1000	
MS-1000-12	17	35	50	190	720-900	1000	
MS-1000-14	17	30	50	190	840-1.050	1000	
MS-1000-16	17	25	50	190	960-1200	1000	

Final speed will depend on product and film characteristics

Noise level  
< 70 Db

Max. Reel dimensions  
500 mm. Ø

Electrical consumption  
7,5-11,5 Kw

Reel shaft  
76 (3")/152 (6") mm. Ø

Air consumption  
250 l/min

Air pressure  
6 bar



# WE STICK TO THE TREND

WORLDWIDE SALES NETWORK [WWW.MESPACK.COM](http://WWW.MESPACK.COM)







#### MS-1000/1200 MAIN FEATURES

- Maximum reel width 1000 MM and 1200 MM
- Independent servo-driven film unwind system
- Pneumatical film brake system with proportional speed of unwind
- Servo driven main film drive system
- Servo driven horizontal seal jaws
- Pneumatical expandible reel shaft
- Adjustable horizontal cutting knives (*flat or zig-zag*)
- Motor driven circular knives
- PLC independent temperature control seals bars
- PLC controlled auto lubrication
- 12" Allen-Bradley color touch screen
- Free access to operating side of the machine
- Free access to the inside of the machine for maintenance
- Micro-switch protected transparent polycarbonate guardings
- Integrated electrical cabinet (*independent opt.*)
- Full servo (*opt.*)
- Laser coders and scorers (*opt.*)
- ATEX compliance (*opt.*)
- Film sterilization system (*opt.*)
- Laminar flow (*opt.*)
- Integrated film splice system in the unwinder (*opt.*)

## MS-SERIES MS-1200

#### TECHNICAL SPECIFICATIONS

MACHINE	MIN. STICK WIDTH	MAX. STICK WIDTH	MIN. STICK LENGTH	MAX. STICK LENGTH	CAPACITY-BAGS / MINUTE	MAX. REEL WIDTH	MACHINE DIMENSIONS
<b>MS-1200-4</b>	17	115	50	190	240-280	1200	2200 x 3300 x 2300 (without dosing system)
<b>MS-1200-6</b>	17	90	50	190	360-420	1200	
<b>MS-1200-8</b>	17	70	50	190	480-560	1200	
<b>MS-1200-10</b>	17	50	50	190	600-700	1200	
<b>MS-1200-12</b>	17	45	50	190	720-840	1200	
<b>MS-1200-14</b>	17	35	50	190	840-1.050	1200	
<b>MS-1200-16</b>	17	30	50	190	960-1200	1200	
<b>MS-1200-18</b>	17	28	50	190	1080-1350	1200	
<b>MS-1200-20</b>	17	25	50	190	1200-1500	1200	

Final speed will depend on product and film characteristics

Noise level  
< 70 Db

Max. Reel dimensions  
500 mm. Ø

Electrical consumption  
8,5-13,5 Kw

Reel shaft  
76 (3")/152 (6") mm. Ø

Air consumption  
250 l/min

Air pressure  
6 bar



FULL SERVO DRIVE TECHNOLOGY

# 4 SIDE SEAL **MULTILANE** MACHINE

ML-SERIES

## **ML-1000/1200**

Our continuous evolution and innovation plans in the design and manufacturing of packaging machines, have lead us to present this new vertical multilane machine which is offered in two different models ML-1000 and ML-1200. Available between 4 and 14 lanes.

The ML Series is specially suited for a multitude of products, granules, powder and liquids and is widely used in pharma, food, and home & personal care sectors.

We offer as well automatic downstream equipment as conveyors, pick and place robots and cartoning facilities.

Newest motion technology with integrated PLC functions which sequences 7 brushless motors:

- ⊕ One brushless motor for the main film drive system and vertical cutting knives
- ⊕ Two brushless motors for unwinder
- ⊕ Two brushless motors for the vertical seal bars
- ⊕ One brushless motor for horizontal cutting knives
- ⊕ One brushless motor for horizontal seal bars







## ML1000/1200 MAIN FEATURES

- Mono block tubular steel frame
- Integrated electric cabinet
- Micro switch protected polycarbonate guardings
- 12" Allen Bradley color touch screen
- Free access all round the machine
- PLC controlled temperatures in each seal bar
- PLC controlled auto lubrication
- Splice table in unwinder for quick reel change
- Auger cleaning management system
- Automatic reel edge aligner in unwinder
- T.P.M. features
- CIP facilities
- Compliance with the main manufacturing standards
- Laser coders and scorers *(optional)*
- ATEX compliance *(optional)*
- Film sterilization system *(optional)*
- Laminar flow *(optional)*

## TECHNICAL SPECIFICATIONS

MACHINE	MIN. BAG WIDTH	MAX. BAG WIDTH	MIN. BAG LENGHT	MAX. BAG LENGHT	CAPACITY-BAGS / MINUTE	MAX. REEL WIDTH	MACHINE DIMENSIONS
<b>ML-1000-4</b>	45	120	60	200	240-280	1000	3468 x 2498 x 2380 (without dosing system)
<b>ML-1000-5</b>	45	100	60	200	300-350	1000	
<b>ML-1000-6</b>	45	80	60	200	360-420	1000	
<b>ML-1000-7</b>	45	70	60	200	420-490	1000	
<b>ML-1000-8</b>	45	60	60	200	480-560	1000	
<b>ML-1000-10</b>	45	50	60	200	600-700	1000	

Final speed will depend on product and film characteristics



## TECHNICAL SPECIFICATIONS

MACHINE	MIN. BAG WIDTH	MAX. BAG WIDTH	MIN. BAG LENGHT	MAX. BAG LENGHT	CAPACITY-BAGS / MINUTE	MAX. REEL WIDTH	MACHINE DIMENSIONS
<b>ML-1200-4</b>	45	130	60	200	240-280	1200	3468 x 2598 x 2380 (without dosing system)
<b>ML-1200-5</b>	45	120	60	200	300-350	1200	
<b>ML-1200-6</b>	45	100	60	200	360-420	1200	
<b>ML-1200-7</b>	45	80	60	200	420-490	1200	
<b>ML-1200-8</b>	45	70	60	200	480-560	1200	
<b>ML-1200-10</b>	45	60	60	200	600-700	1200	
<b>ML-1200-12</b>	45	50	60	200	720-840	1200	
<b>ML-1200-14</b>	45	50	60	200	840-980	1200	

Final speed will depend on product and film characteristics

Noise level < 70 Db	Max. Reel dimensions 500 mm. Ø	Electrical consumption 18-26 Kw	Reel shaft 76 (3")/152 (6") mm. Ø	Air consumption 200 l/min	Air pressure 6 bar
------------------------	-----------------------------------	------------------------------------	--------------------------------------	------------------------------	-----------------------

# H SERIES

## **H-170**

This model has been developed to complete our low cost range of machine where larger pouch capabilities are required without incurring into higher cost of more sophisticated machines.

This model is more compact and user friendly as all electric controls are integrated in the machine frame.

The H-170 keeps the rugged construction which is characteristic in the Mespack program and incorporates 2 filling stations. A third filling station is optional.

High speed unit for around the clock operation with minimum maintenance and multiple filling capabilities. Ideal when limited floorspace available.

## **INNOVATIVE PACKAGING TECHNOLOGIES**

## **H-130**

This is a medium size machine which can be used both in simplex or duplex operation.

When set for duplex it produces two sachets for its machine stroke with capacity up to 200 sachets a minute.

Main application is for twin or stringed sachets which may contain same or different products, i.e. coffee-milk, sugar-salt, ketchup-mayonnaise.

Another wide extended use for this machine is in the cosmetic industry for creams, lotions or refreshing towelettes

Different types of fillers can be used according to the characteristics of the product.

## **H-140**

The H-140 has been designed to produce medium size sachets and it's remarkable for its simplicity and user friendly operation.

Reduced in size it allows to fill up to three different components into the same sachet.

Ideal for soup products where medium capacity is needed (up to 100 sachets/minute) and it's very reasonably priced.

Low maintenance and change over simplicity are a plus in this model. Full range of filling heads combinations feasible.

## **H-100**

Small, compact, flexible, this machine it's remarkable for its versatility, high efficiency and low cost.

Suitable for both single or stringed sachets. It can incorporate a wide range of accessories as date coders, notches, hole punchers, towelette fillers, etc.

It allows to mount a variety of different types of fillers, cup fillers for granules or free flowing product, auger fillers for powders or pump fillers for liquid or viscous products.



**H-SERIES**

# H-170/140

## TECHNICAL SPECIFICATIONS

MACHINE	POUCH SIZE MIN.	POUCH SIZE MAX.	MAX. VOLUME	OUTPUT PPM.	FILLING STATION
<b>H-170 S</b>	60 x 60	170 x 200	600 c.c.	up to 100	2 - 3
<b>H-170 D</b>	50 + 50 x 60	85 + 85 x 200	125 c.c.	up to 200	2 - 3
<b>H-140 S</b>	70 x 100	140 x 200	250 c.c.	up to 100	2
<b>H-140 D</b>	50 + 50 x 100	70 + 70 x 200	90 c.c.	up to 200	2

Final speed will depend on product and film characteristics

Noise level  
< 70 Db

Max. Reel dimensions  
450 mm. Ø

Electrical consumption  
7,5-8 Kw

Reel core  
76 (3") mm. Ø

Air consumption  
80-110 l/min

Air pressure  
6 bar



**HI-SPEED LOW COST** FLAT POUCH MAKER

**H-SERIES**

# H-130/100

## TECHNICAL SPECIFICATIONS

MACHINE	POUCH SIZE MIN.	POUCH SIZE MAX.	MAX. VOLUME	OUTPUT PPM.
<b>H-130 S</b>	30 x 30	130 x 130	60 c.c.	up to 110
<b>H-130 D</b>	35 + 35 x 130	65 + 65 x 130	20 c.c.	up to 220
<b>H-100 S</b>	30 x 30	100 x 130	50 c.c.	up to 100

Final speed will depend on product and film characteristics

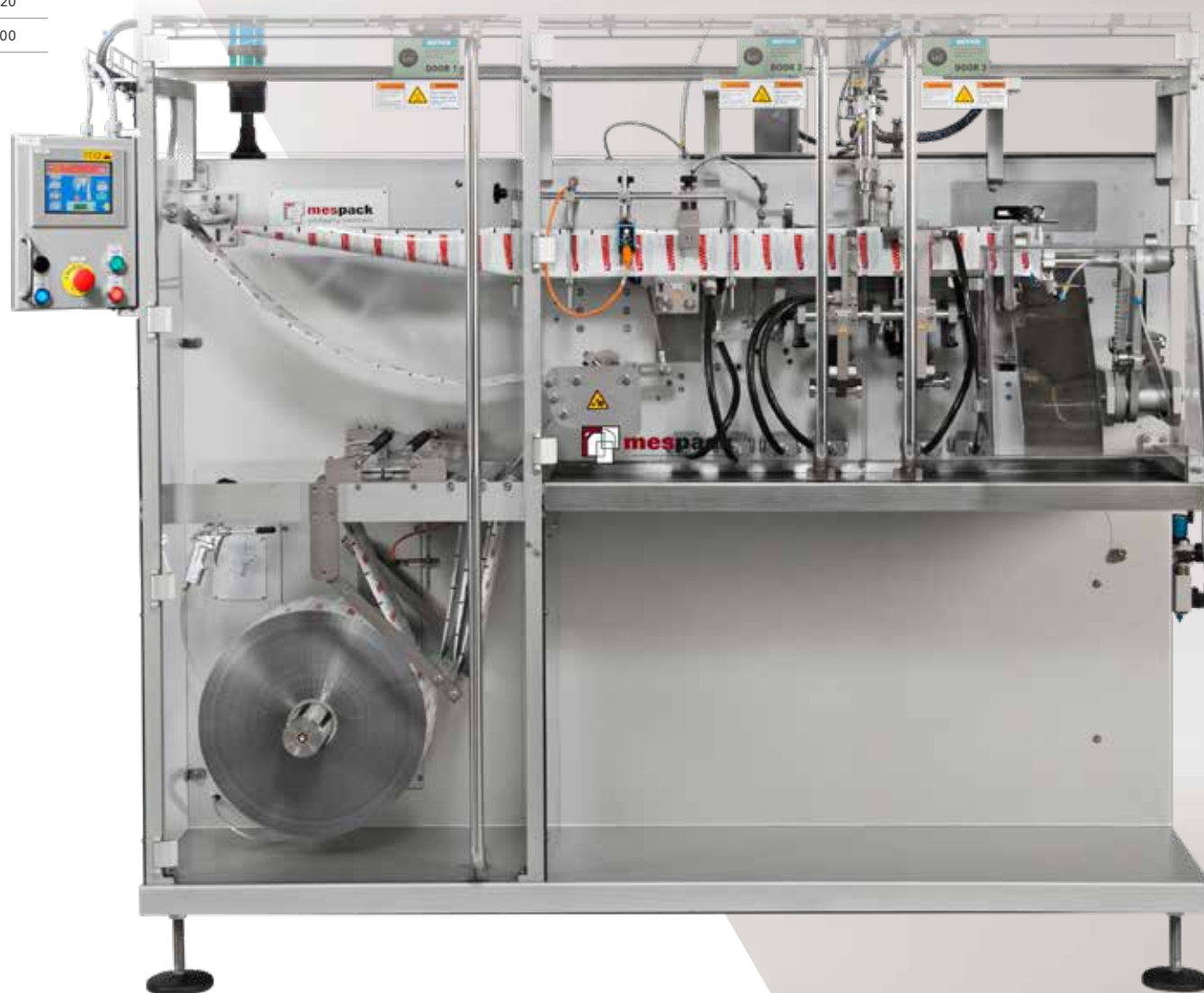
Max. Reel dimensions  
450 mm. Ø

Electrical consumption  
6-7 Kw

Reel core  
76 (3") mm. Ø



**SMALL,  
COMPACT  
AND FLEXIBLE**





A conceptual image featuring a transparent blue sphere containing green leaves, set against a background of a cloudy sky and a weathered tree trunk. The sphere is positioned on the left side of the frame, and the leaves inside are vibrant green. The tree trunk on the right is grey and textured, with several small branches extending from it. The sky is a mix of blue and white clouds.

***the value of  
preserving the product***



**mespack**

A DURAVANT COMPANY



**MESPACK, S.L.**

**Mar Adriàtic 18 · Pol. Ind. La Torre del Rector**

**08130 Santa Perpètua · Barcelona · SPAIN**

**Tel. +34 93 574 72 27 · Fax +34 93 560 02 00**

**[info@mespack.com](mailto:info@mespack.com) · [www.mespack.com](http://www.mespack.com)**



THE **DURAVANT** FAMILY OF COMPANIES

[www.duravant.com](http://www.duravant.com)

ARPAC | FISCHBEIN INTERNATIONAL | FMH CONVEYORS | HAMER-FISCHBEIN | KEY TECHNOLOGY | MARLEN INTERNATIONAL | MESPACK | OHLSON | QC INDUSTRIES