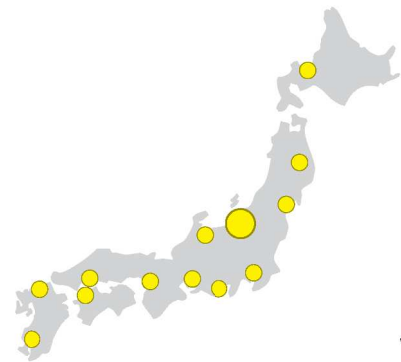




Agents



Japan office

For more information, contact our office listed below.

The contents of the specifications are subject to change without prior notice due to continual improvement.



System Square Inc. Japan

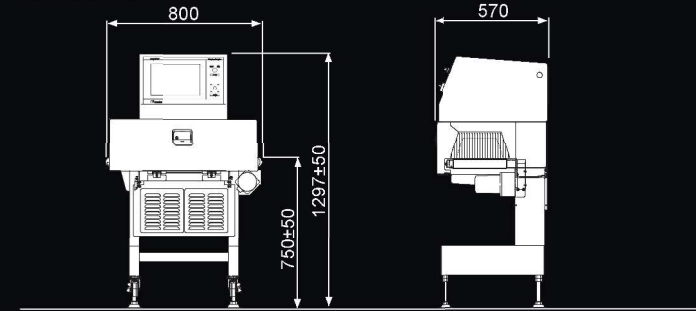
Head Office / Head Plant
157 Kanawa, Kitamachi, Nagaoka, Niigata 9402121, Japan
TEL +81-258-47-1377 FAX +81-258-47-0161

Agents
Korea • Taiwan • China • Philippines • Thailand • Singapore • Australia
Europe • United Arab Emirates • Malaysia • Indonesia • Vietnam • Mexico

Japan office
Sapporo • Iwate • Sendai • Niigata • Tokyo • Shizuoka • Toyama • Nagoya
Kansai • Hiroshima • Shikoku • Fukuoka • Kagoshima

www.system-square.com

SX2353HW

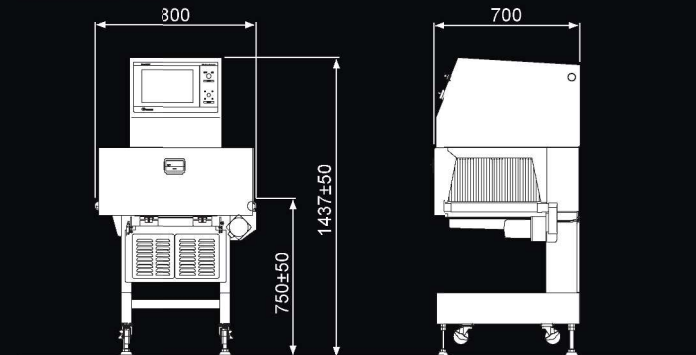


Unit: mm

[Inspectable range]	H	120	110	100	90	80	70	60	50	40	30	20	10	0
	W	155	160	165	171	176	182	187	192	198	203	209	214	220

Model	SX2353-1W
Dimension of inspection product ^{*1}	W220mm × H120mm
Transport weight	5kg ^{*2}
Transport belt speed	15 to 45m/min ^{*3}
Belt width	270mm (without improper tracking-less function) (270mm with improper tracking-less function is optional.)
Detection sensitivity	φ0.2mm iron or stainless ball, stone, glass, hard tone, and high density plastic pieces, etc. ^{*4}
Display unit	12.1-inch wide TFT color LCD (with touch panel)
Structure	Main unit/Base: All-stainless (SUS304) Waterproof structure with the main unit conforming to IP66 ^{*5}
Pass line	750±50mm
Max. X-ray output	Tube voltage (Max.): 50kV, Tube current: 5.0mA However, the electric power is limited to 150W
Operating environment	Temperature: 0 to 35°C, Humidity: 30 to 85%, No dew condensation allowed. ^{*6}
Weight	138kg
Power supply	AC100V±10% / AC200V±10% 1kVA 50/60Hz

SX3873HW



Unit: mm

[Inspectable range]	H	150	140	130	120	110	100	90	80	70	60	50	40	30	20	10	0
	W	267	273	280	287	294	301	308	315	321	328	335	342	349	356	363	370

Model	SX3873-1W
Dimension of inspection product ^{*1}	W370mm × H150mm
Transport weight	5kg ^{*2}
Transport belt speed	15 to 45m/min ^{*3}
Belt width	420mm (without improper tracking-less function) (420mm with improper tracking-less function is optional.)
Detection sensitivity	φ0.2mm iron or stainless ball, stone, glass, hard tone, and high density plastic pieces, etc. ^{*4}
Display unit	12.1-inch wide TFT color LCD (with touch panel)
Structure	Main unit/Base: All-stainless (SUS304) Waterproof structure with the main unit conforming to IP66 ^{*5}
Pass line	750±50mm
Max. X-ray output	Tube voltage (Max.): 75kV, Tube current: 8.0mA However, the electric power is limited to 300W
Operating environment	Temperature: 0 to 35°C, Humidity: 30 to 85%, No dew condensation allowed. ^{*6}
Weight	185kg
Power supply	AC100V±10% / AC200V±10% 1.5kVA 50/60Hz

^{*1} According to the product length, the cover may be needed. ^{*2} For other weight, contact System Square Inc. ^{*3} For other transport belt speed, contact System Square Inc. ^{*4} The detection capability may vary depending on the inspection product and operating environment. ^{*5} This waterproof standard may not apply when options are mounted. ^{*6} When the operating environment temperature exceeds 35°C, contact System Square Inc.
* Appropriate options may be separately needed in the following cases: Large temperature deviation in the installation location, high humidity, too cold or too hot object to be inspected.

SC192-110-A-P



X-Ray Inspection System

SX2353HW
SX3873HW

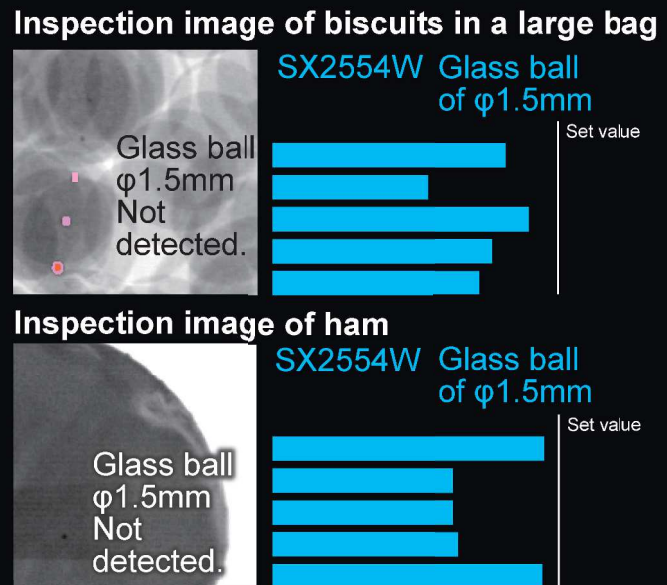
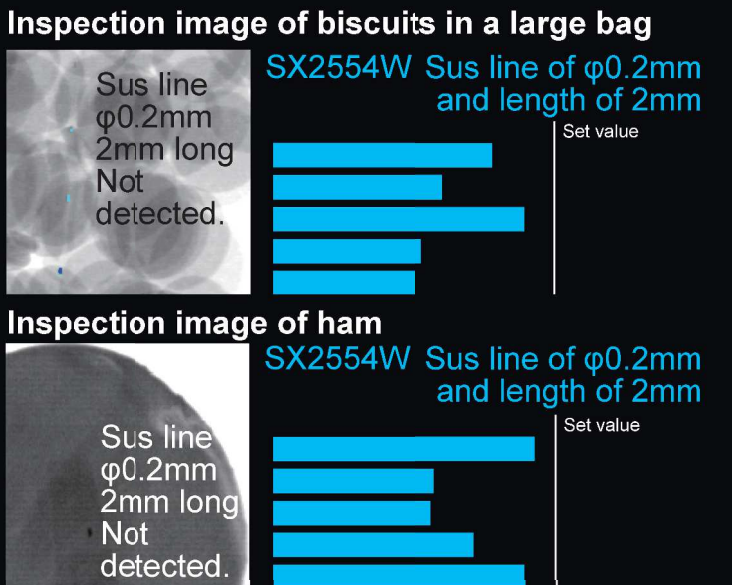
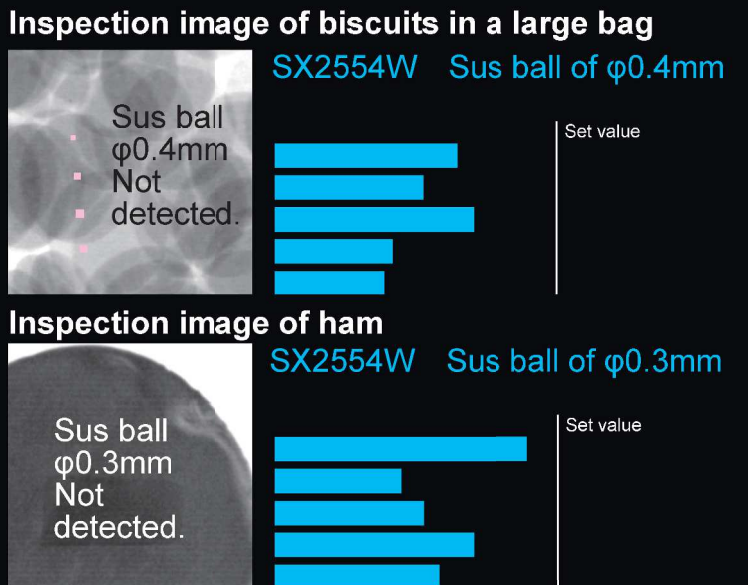
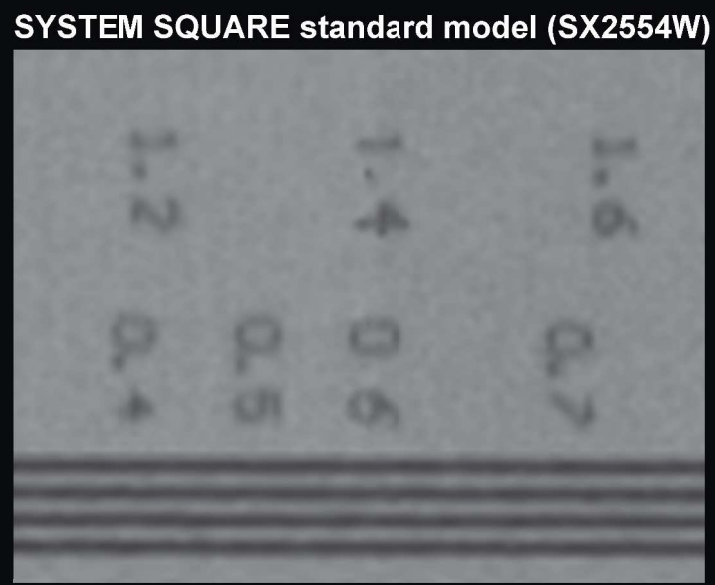
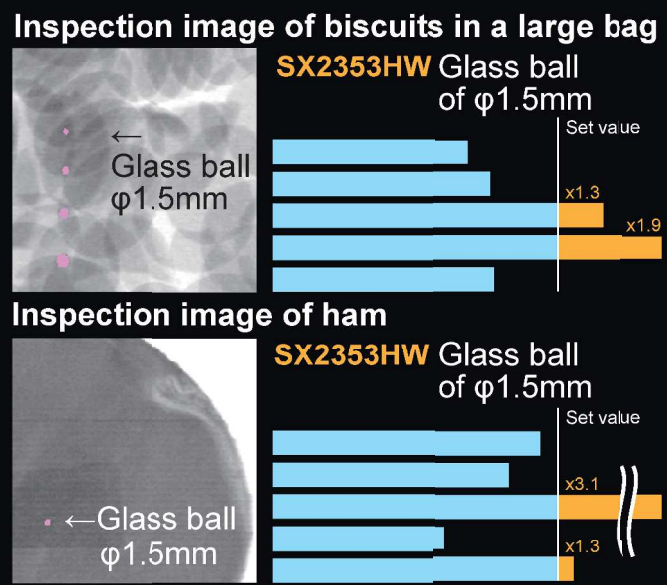
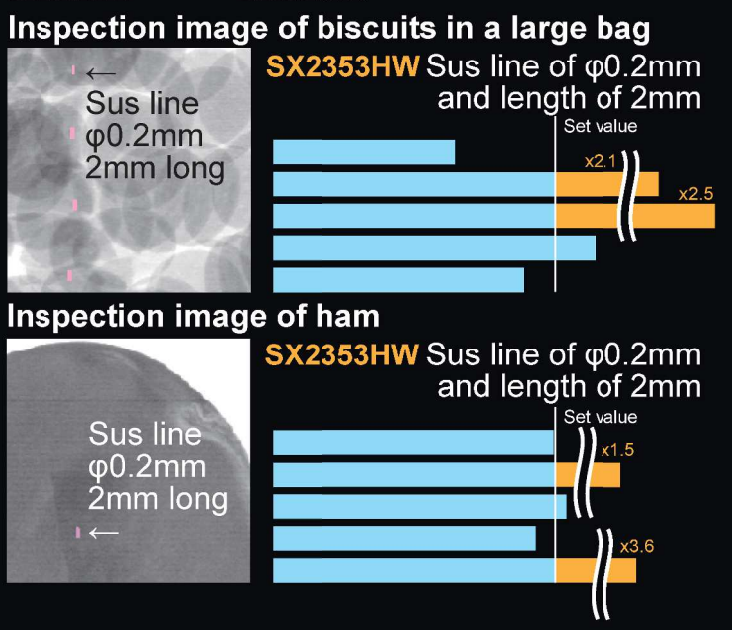
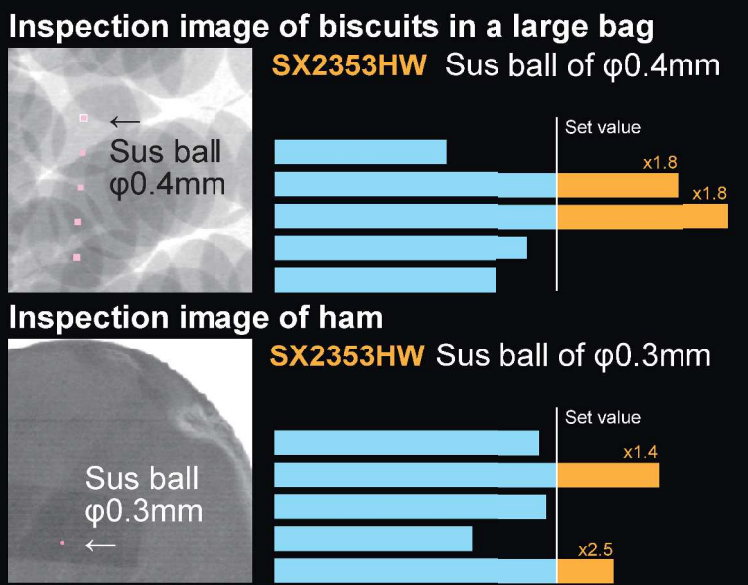
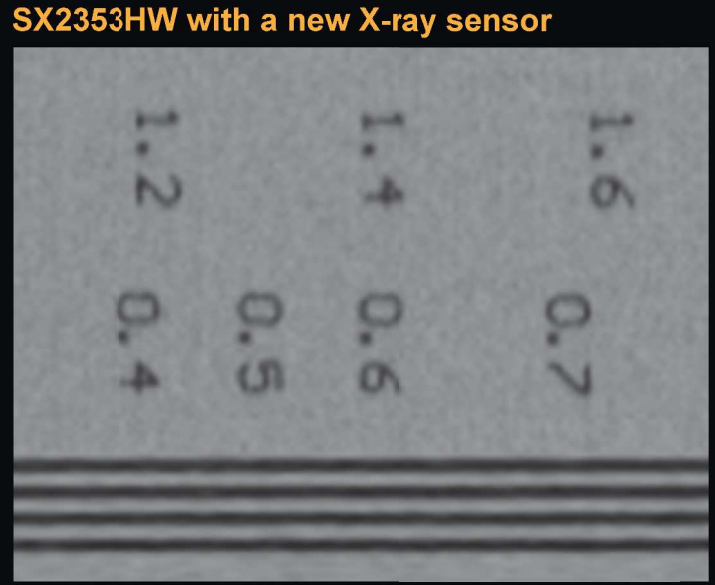


New X-ray Sensor
High-sensitivity Inspection
Stability

3H

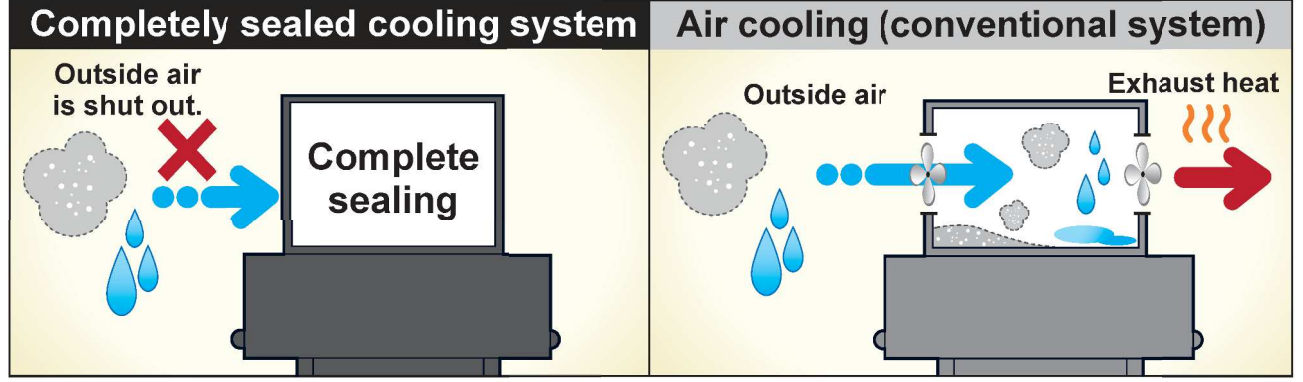
High-sensitivity and Stability Achieved Simultaneously!

SX2353HW / SX3873HW



Completely sealed cooling system is used.

As the complete sealing is achieved, this greatly reduces damages to the system units due to humidity or dust. So, the system has a safer structure.



The overall system conforms to IP66.

The overall system conforms to IP66. The system needs no cooling unit and can be operated in a wide variety of environments.

