

Designed for your goals.
Built for your reality.

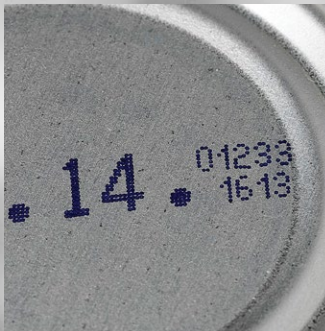
Continuous Ink Jet

Videojet® 1550 & 1650





It's not about bells and whistles. It's about what you need to meet your goals in the real world.



Your goals. Your reality.



The practical world, where codes need to be right every day, every time. A world where uptime and continuous improvement are directly reflected in your metrics. Where the goal is to shrink downtime and expand true availability. And where maintenance is a predictable, preventive routine. That's what Videojet 1550 and 1650 printers are all about.

Videojet is your partner for productivity.

Uptime advantage

With customer field research showing 99.9% availability*, our 1000 Line Continuous Ink Jet printers clearly demonstrate the efficacy of our innovations – like the CleanFlow™ printhead and Dynamic Calibration™.

Code Assurance

Our advanced software minimizes and mistake-proofs operator inputs to the coding and marking process to help reduce errors. By specifying error-proofing rules during set-up, operator inputs are limited to the choices you specify.

*For more details on printer availability, please refer to page 4 of this brochure.

Built-in productivity

To continuously improve uptime and OEE, you need more than availability percentages. Our interface gives you instant fault information to get your line back and running again – fast. But it also enables you to get to the root cause of downtime events and fix them for good.

Simple usability

From the large, bright interface to the Smart Cartridge™ fluid system that significantly reduces waste, mess, and mistakes, our Continuous Ink Jet printers are designed for simple and limited interaction. We make start-up, operation and maintenance simple – so you can focus on production.

Your goal is uptime, pure and simple



No excuses. No ifs, ands, or buts.

The more scheduled production time, and the more equipment availability during that time, the more you hit your targets. In the real world, there's unplanned downtime. Difficult maintenance procedures. Shutdowns, headaches and setbacks. Standing in the way of your goals.

The Videojet uptime advantage



Recent customer field results show:

99.9% availability*

* Results of 99.9% availability obtained from a survey of customers representing over four hundred 1000 Line printers on active production lines. Over half of the surveyed customers experienced 100% availability. Individual results may vary.

Your goal is to maximize planned production time. Make sure unplanned downtime doesn't get in the way.

Uptime drives Overall Equipment Effectiveness (OEE). And OEE drives profits. Every manufacturer's goal is to bring production lines as close as possible to 100 percent uptime. For variable coding processes, Videojet's 1550 and 1650 printers help you get there, with innovations no other printers can deliver.

Our exclusive CleanFlow™ printhead and Dynamic Calibration™ resist ink buildup and help ensure print quality to keep the printer running reliably. Our long-lasting core provides industry-leading runtimes – up to 14,000 hours of continuous operation between planned maintenance procedures that your staff can perform.

And our 1550 and 1650 printers provide Availability metrics that can be configured to your measurement preferences.

Less frequent printhead cleanings.

Our patented CleanFlow™ printhead design provides a positive flow of filtered air to reduce ink buildup that can cause ordinary ink jet printers to shut down.

So you get reliably clear and consistent codes, and run longer between printhead cleanings.

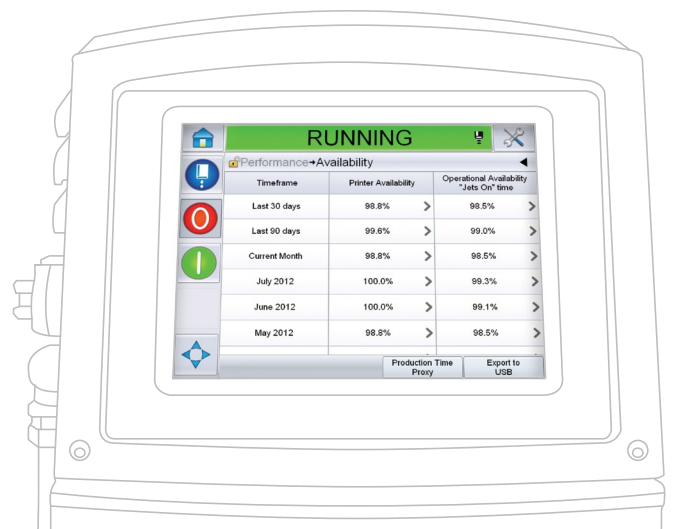
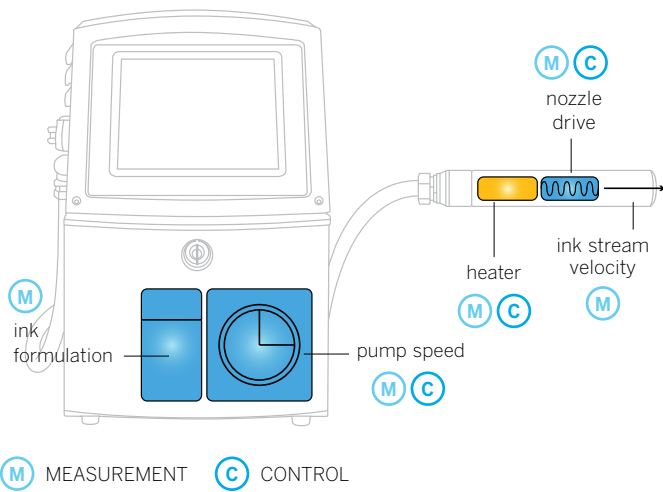


Dynamic Calibration™ for better print quality

Dynamic Calibration™ applies some of the industry's most sophisticated measurements and controls to adjust jetting parameters automatically. As ambient temperature and humidity change throughout the day and across the seasons, you can count on the same great print quality – only from Videojet.

Match the measurement to your operation

Configure the printer to track Availability the way you want. Track against Power-On time – meaning the printer is turned on. Or track against Jets-On time – meaning ink is cycling and the printer is either printing or ready to print on demand. Choose the method that best represents your planned production time and OEE methods.



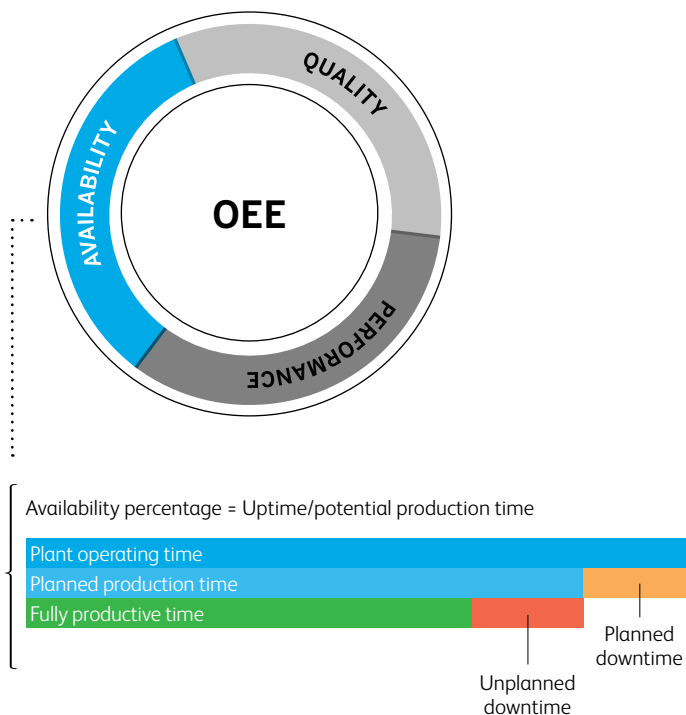
Information you can act on to improve productivity

Your targets only get tougher over time.
You need to be producing, not struggling.

What kind of information would it take to discover root causes of downtime and put them behind you?

So you can hit your targets today, and make sustainable improvements for even greater productivity tomorrow?

Productivity tools



Improve OEE overtime

The 1550 and 1650 printers are designed to support continuous OEE improvement, providing usable information you can act upon – whether that means changing a print parameter or correcting an operator procedure.



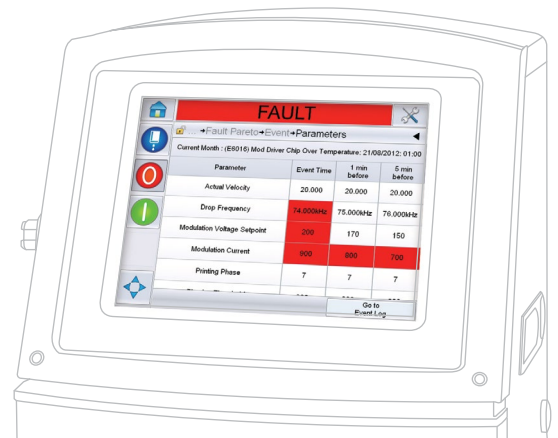
The 1550 and 1650 CLARiTY™ interface presents fault information in a logical way that allows you to identify and focus on the biggest issues and drill down to discover the root causes of unplanned downtime.

Result: You can take action to eliminate the root cause and achieve sustainable improvements.

To continuously improve uptime and OEE, you need more than availability percentages

Without understanding the context of this information, you can't solve the problem. You need the ability to focus on the biggest issues and drill down to discover the root causes of unplanned downtime.

More than the status of technical functions, the 1550 and 1650 printers display details about both Printer Availability and Operational Availability. Drill down into Printer Availability data to discover technical and operational causes of unplanned downtime. Everything is presented in a logical way to support efficient and effective problem-solving. The CLARiTY™ interface displays the information you need to quickly learn not just what happened, but what's really going on. So you can confidently identify the root cause of downtime and fix it to achieve sustainable process improvements.



Recover faster from a fault

Our CLARiTY™ interface gives you instant fault information that you can use to troubleshoot problems and get your line back up and running ASAP.



See the biggest drivers of downtime



Review frequency and duration



Diagnose root cause, make process improvements

Foolproofing code entry

This is how your goal looks:

Never, ever a wrong code, a wrong date, a wrong lot identification. Ever.

This is how reality looks:

Codes that are one digit off, dates that don't exist, codes on wrong products, typing errors, wrong offset dates. Coding errors that are likely to be operator errors 50% – 70% of the time.



Bad codes can mean waste, rework, regulatory fines and potential damage to your brand. Let that happen to the other guys. We can help you keep your line productive, and your brand strong.

Welcome to Code Assurance

Videojet's comprehensive approach to printing the right codes on the right products.

Our advanced software minimizes and mistake-proofs operator inputs to the coding and marking process to help eliminate errors.

Easily create error-proofing rules during setup – for example, whether or not fields can be edited, permissible data types and date range restrictions. The operator is limited to the choices you specified, with field prompts, drop-down menus, calendar displays and predefined formats that help ensure correct entries. A preview of the print layout must then be confirmed before starting the job.

Want even more Code Assurance?

Add CLARiSOFT™ to get rules-based code creation on your office PC and prevent unauthorized users from editing rules or codes. Add CLARiNET™ and you can push codes to one or more printers automatically over your existing network and pull data from a database to populate your codes, further reducing the opportunity for mistakes.



Foolproof set-up wizardry. Easily create error-proofing rules during job setup – such as whether or not fields can be edited, permissible data types, date range restrictions and more.



Visual job selection. Job files can be saved and searched using meaningful names, such as the product that is being coded. A preview of the message provides additional confidence that the right job is loaded.



Step-by-step guided data entry. Based on the rules you defined during job setup, only permissible fields can be edited. The print job can be loaded only after the operator has confirmed each entry.

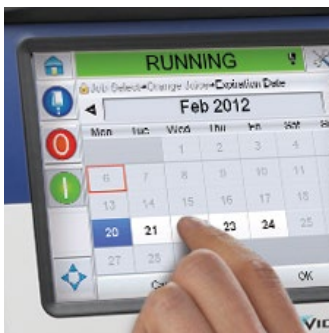


Multiple choices for minimal errors. Data-entry screens limit operators to the choices defined during job setup. Entering a date? Choose it from a calendar showing permissible expiration dates. A country code? Choose it from a drop-down list. A lot code? Load it into a predefined format automatically.

Designed for limited and simple interaction so you can focus on production

This starts with a large, bright interface. The Smart Cartridge™ fluid system significantly reduces waste, mess and mistakes.

And when it's time for planned maintenance, the modular core system gets you right back to production.



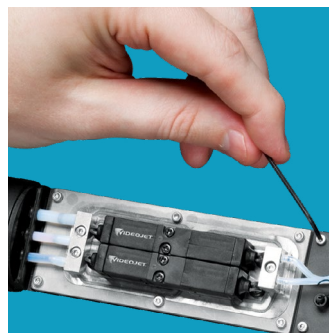
Interactive touchscreen

Our bright 264mm (10.4") touchscreen makes it easy to monitor job status at a distance. And our fast, intuitive interface streamlines daily interaction, clearly displaying real-time fluid levels, maintenance alerts, print jobs and other operational information.



Modular core

The advanced core design enables 1550 and 1650 printers to perform up to 14,000 hours between planned maintenance. The core is customer-replaceable, and includes all ink system filters and common wear parts.



Modular printhead design

Automatic setup, calibration and adjustment helps ensure consistent performance with minimal operator intervention. The printhead is easy to clean and provides long runs between cleanings, with fast, easy startup even after extended shutdown.



Superior ink technology

The perfect ink for every job.

Videojet's Smart Cartridge™ fluid system makes it easy to change inks on a predictable schedule, with no waste, no mess and no chance of loading the wrong ink or an incompatible make-up fluid by mistake. We fill these self-contained cartridges with the industry's highest-quality inks and fluids, formulated to meet nearly any application requirement.

Glass, plastics and metal. Oily, waxy or damp substrates. High-speed and high-temperature processes. Resistance to fading, solvents, abrasion and transfer. Whatever your requirements, there's likely a Videojet Smart Cartridge™ ink that will handle it. And we have the expertise to help you choose the right one.



Service/support

Quality, productivity, uptime.
We'll help you reach your goals

From installation and training tailored to your operational needs – to preventive maintenance and rapid response – to collaboration for continuous improvement. Our global service organization isn't just the world's largest and most responsive. It's a team of experts dedicated to your complete success, from day one through every day's productivity requirements.

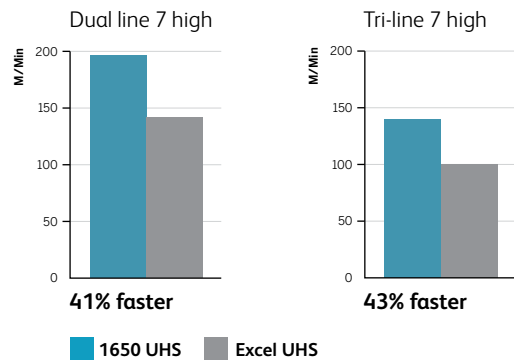
We don't just want to be your supplier. We want to be part of your team, whether it's solving today's problems or helping you achieve more tomorrow than you thought possible.



Ultra high speed coding

Speed, Content and Quality without Compromise

In your production environment the need for increased speed never relents, and when it comes to product coding it can go beyond just running your line faster. **The Videojet 1650 Ultra High Speed (UHS)** printer is the ultimate in speed with dual and tri-line codes up to 40% faster than the previous industry benchmark, the Videojet Excel UHS, all without compromising print quality. The 1650 UHS allows you to print more content in the same space, shrink an existing code to preserve precious packaging real estate or make it bigger or bolder to be easily readable.

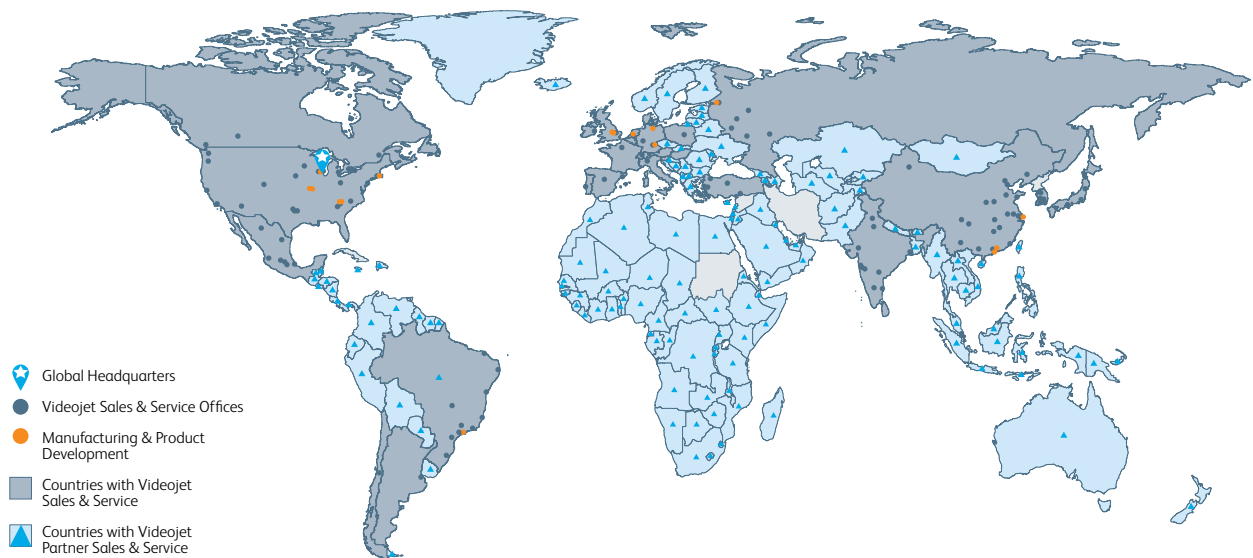


The 1650 UHS printer's **Videojet Precision Ink Drop™ System** delivers superior code quality. The 1650 UHS generates up to 100,000 individual drops per second. Generating the drops is the easy part... rendering them into a high quality code is what sets the 1650 UHS apart. With Precision Ink Drop™ technology, Videojet takes a system-based approach to print quality, combining unique ink chemistry, advanced high frequency printhead design, and sophisticated software algorithms that modify the flight path of individual ink drops for optimal code quality.

Peace of mind comes as standard

Videojet is a world leader in industrial coding and marking solutions, with more than 325,000 printers installed worldwide. Here's why...

- We leverage over 40 years of globally gained expertise to help you specify, install and utilize the most cost-effective solution; one best suited to your operations.
- We deliver a wide range of products and technologies that deliver tangible results across an extensive range of applications.
- Our solutions are highly innovative. We are committed to investing in new technologies, research and development and continuous improvement. We stay at the forefront in our industry, to help you do the same in yours.
- We have earned a reputation for both the long-term reliability of our products and excellent customer service, so you can choose Videojet and relax.
- Our international network includes more than 3,000 staff and over 175 distributors and OEMs, in 135 countries. So wherever and whenever you're ready to do business, we're ready to serve.



Call **65 6444 4218**
Email **marketing.singapore@videojet.com**
or visit **www.videojet.sg**

Videojet Technologies (S) Pte Ltd
No.11 Lorong 3 Toa Payoh
Block B #03-20/21 Jackson Square
Singapore 319579

©2013 Videojet Technologies Inc. — All rights reserved.
Videojet Technologies Inc.'s policy is one of continued product improvement.
We reserve the right to alter design and/or specifications without notice.

Part No. SL000558
1550/1650-1113

